

## **Appendix I : Coverage Maps & Impact Assessment**

### **Contents:**

Introduction.....	2
Impact on the Main Multiplexes .....	2
Theoretical Interleaved Coverage Achieved.....	3
Theoretical Worst Case Impact on PSB Multiplexes .....	6
Impact on Bilsdale ch26.....	7
Impact on The Wrekin ch30 .....	9
Impact on Sheffield PSB ch24 .....	11
Summary Table of Worst Case Impact of Interleaved channels on PSB multiplexes.....	13
Worst Case Impact on COM Multiplexes.....	21
Impact on Waltham COM ch29 .....	21
Impact on Idle COM ch45 .....	21
Impact on Moel-y-Parc COM ch51 .....	21
Summary Table of Worst Case Impact of Interleaved channels on COM multiplexes.....	21

## Introduction

The introduction of any new application within the spectrum reserved for the six main multiplexes will have an impact on the coverage of the main multiplexes. The methodology adopted as part of this study for assessing the parameters associated with an interleaved channel is aimed at protecting the core coverage of a station, as defined by the digital preferred service area (DPSA), and limiting any impact to areas of station overlap. This approach protects the UK target of 98.5% coverage for the PSB multiplexes whilst allowing sufficient flexibility to identify viable interleaved channels at the majority of the 71 broadcasting stations considered.

The coverage of the 71 interleaved channels (see Appendix II) and the impact on version 5.5 of the UK plan has been assessed.

## Impact on the Main Multiplexes

On a national basis the impact of introducing an interleaved channel at 71 stations is minimal. Basing the interleaved channels on the specified templates, UK coverage of locations where all three public service multiplexes (3PSB) are predicted as being available falls by 290 households (0.001% of UK). Coverage of locations where all six of the main multiplexes are predicted as available (6Core) falls by 2,260 households (0.009% of UK), Table AI-1. It should be noted that the use of templates is a worst case with respect to the impact on the main multiplexes; real antennas will have a lower impact.

The theoretical maximum impact on the gross coverage of individual PSB stations is summarised in Table AI-4 and Table AI-5. The impact on the coverage of the PSB channels at Bilsdale (ch26), The Wrekin (ch30) and Sheffield (ch24) have been considered in more detail, Figures AI-2 to AI-7. This shows that whilst there is an impact on the gross coverage of a station it is in overlap areas and outside the DPSA.

The impact on the gross coverage of individual COM stations is summarised in Table AI-6 and Table AI-7. The impact on the coverage of the COM channels at Waltham (ch29), Moel-y-Parc (ch51) and Idle (ch45) have been considered in more detail, Figures AI-8 to AI-13. This shows that whilst there is an impact on the gross coverage of a station it is in overlap areas and outside the DPSA.

	V5.5 coverage households	V5.5 percentage of UK	V5.5 + 71 Interleaved stations households	V5.5 +71 percentage of UK	Worst case theoretical potential Impact on v5.5 coverage households
PSB1	26,041,592	99.10%	26,041,236	99.09%	-356
PSB2	26,008,270	98.97%	26,007,333	98.97%	-937
PSB3	26,016,709	99.00%	26,013,973	98.99%	-2,736
COM4	24,379,842	92.77%	24,373,766	92.75%	-6,076
COM5	24,348,610	92.65%	24,346,493	92.65%	-2,117
COM6	24,420,188	92.93%	24,414,064	92.90%	-6,124
3PSB	25,906,370	98.58%	25,906,080	98.58%	-290
6CORE	23,794,798	90.55%	23,792,538	90.54%	-2,260

Table AI-1 : Comparison of the coverage of the Main multiplexes pre and post the introduction of interleaved channels

The UKPM uses a cut-off method to assess whether a location is classified as served or not. At some locations the increase in interference resulting from the introduction of interleaved services will result in the UKPM classifying these locations as not having a service, e.g. the 290 households. However, the planning rules are designed to limit the increase in interference to PSB multiplexes within the DPSA to 0.5dB and 1.0dB for commercial multiplexes. As such from a viewers point, those that are predicted as being impacted will suffer a degradation of margin of 0.5dB or 1.0dB which should in its self not result in a loss of service. Though digital systems degrade rapidly, at any location to receive a service reliably a degree of margin is required to allow for the dynamics of the RF channel. Consequently, a reduction of margin of 0.5dB or 1dB should not result in a loss of service. In areas where an impact is predicted it should manifest itself as a small increase in the number of glitches during periods of interference.

Though within the DPSA the increase in interference is controlled so that a service should not be lost, outside the DPSA in overlap areas no such control exists. In these areas any predicted impact may result in the ability to receive the affected station. It should however be noted that in all cases the affected service does not provide the best service – best being as a minimum a 3PSB service and the greatest number of commercial multiplexes.

## Theoretical Interleaved Coverage Achieved

The 71 sites allocated an interleaved channel serve over 80% of UK households if QPSK2/3 modulation is adopted. This coverage falls to a little over 60% if a higher data rate but less robust 64QAM 2/3 modulation scheme is used, Table AI-2. The overall UK coverage of the two modulation schemes is shown in figure AI-1. The gross coverage of individual stations for these two modulation schemes is summarised in Table AI-3.

Modulation scheme	Theoretical Maximum Coverage of 71 stations households	71 stations percentage of UK
QPSK 2/3	21,504,356	81.83%
64QAM 2/3	16,857,312	64.15%

Table AI-2 : Theoretical Maximum Coverage of the 71 Interleaved Spectrum Stations

It should be noted that coverage is based on the template and maximum ERP associated with each of the interleaved channels. Real antennas and ERPs will generally result in a reduction in coverage.

No.	Station	Ch	QPSK2/3 Households served	64QAM2/3 Households served	No.	Station	Ch	QPSK2/3 Households served	64QAM2/3 Households served
10100	CRYSTAL PALACE	29	3931009	2940378	11300	DOVER	57	319390	110551
10101	GUILDFORD	54	721099	198172	11400	TACOLNESTON	57	387237	255428
10103	REIGATE	51	263328	105226	11500	SUDBURY	49	347461	151614
10104	TUNBRIDGE WELLS	51	64744	24468	11600	BILSDALE	24	1009412	587156
10105	HEMEL HEMPSTEAD	49	589709	194604	11700	OXFORD	49	259667	152181
10200	SUTTON COLDFIELD	51	1338947	878929	11800	LLANDDONA	51	48025	33302
10201	BRIERLEY HILL	56	159420	94398	11900	CARMEL	52	102306	59724
10202	KIDDERMINSTER	56	63891	44248	12000	BELMONT	21	655746	259550
10206	BROMSGROVE	29	260141	145829	12002	OLIVERS MOUNT	56	48148	45736
10207	MALVERN	51	246390	135830	12100	THE WREKIN	48	320660	164181
10208	LARK STOKE	48	133082	66143	12300	ANGUS	48	476080	372816
10211	FENTON	29	242279	159555	12400	SANDY HEATH	49	429123	206233
10300	WINTER HILL	56	3008009	2614006	12402	LUTON	45	166709	91727
10302	PENDLE FOREST	30	158514	111716	12500	MIDHURST	46	248723	47993
10306	SADDLEWORTH	43	290267	75990	12600	HANNINGTON	43	470400	172149
10307	STORETON	30	254806	81691	12900	PRESELY	30	70426	35605
10335	LANCASTER	30	135153	63165	13000	LIMAVADY	56	78457	52501
10400	EMLEY MOOR	45	974489	684945	13001	LONDONDERRY	51	55957	48934
10403	SHEFFIELD	26	269629	162291	13100	CARADON HILL	30	238480	134973
10407	KEIGHLEY	56	311269	122538	13105	PLYMPTON	49	114655	63753
10500	BLACK HILL	51	1395627	1158332	13200	STOCKLAND HILL	30	299435	119445
10600	WENVOE	51	718212	507821	13600	BEACON HILL	49	134122	95120
10601	KILVEY HILL	30	195114	150783	13700	CALDBECK	21	139929	109664
10700	DIVIS	30	398166	279100	13800	HUNTSHAW CROSS	51	79755	54086
10801	SALISBURY	49	90465	33410	13900	HEATHFIELD	54	158880	85062
10804	POOLE	50	255945	163476	14100	REDRUTH	55	93671	71146
10805	WHITEHAWK HILL	54	211857	137366	14500	MOEL Y PARC	30	396672	96468
10860	ROWRIDGE VP	29	767967	511251	14700	CRAIGKELLY	52	715401	623422
10900	PONTOP PIKE	56	1163999	990002	14900	RIDGE HILL	30	132457	59025
10903	FENHAM	30	646056	500919	15100	BROUGH MOUNTAIN	30	29475	18435
11000	MENDIP	55	295821	159286	15200	DARVEL	30	805318	346052
11007	BRISTOL KINGS WESTON	30	443183	230024	15211	ROSNEATH VP	48	161375	75242
11008	BRISTOL ILCHESTER CR	51	232606	162060	15300	KNOCKMORE	56	97389	61924
11100	WALTHAM	55	769427	391088	15600	ROSEMARKIE	52	89509	79000
11101	NOTTINGHAM	62	476259	284036	15800	BLUEBELL HILL	56	203385	102491
11200	DURRIS	30	412973	183405					

Table AI-3 : Theoretical Predicted Gross coverage of Interleaved channels<sup>1</sup>

<sup>1</sup> Note coverage is based on antenna templates and maximum ERP, real antenna patterns and actual ERP will generally result in lower coverage.

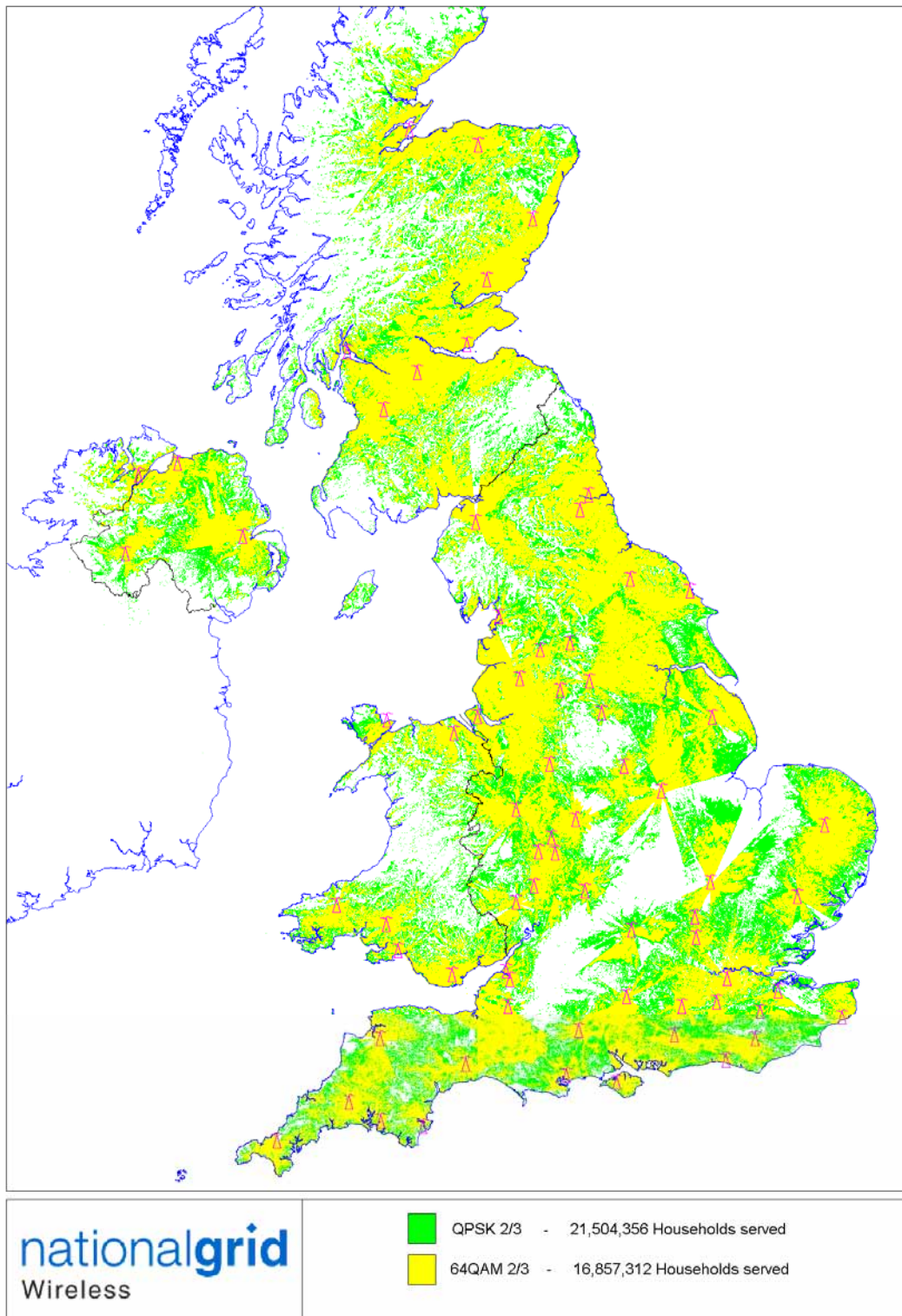


Figure AI -1 : Theoretical Maximum UK coverage of 71 site interleaved spectrum network, 70% locations

### Theoretical Worst Case Impact on PSB Multiplexes

Results Local TV 71 sites Run1 70% Locations		PSB_1	Ch	Chg on v5.5	%Chg on v5.5	PSB_2	Ch	Chg on v5.5	%Chg on v5.5	PSB_3	Ch	Chg on v5.5	%Chg on v5.5	3CORE	Chg on v5.5	%Chg on v5.5	Max Impact
11600	Bilsdale	2241753	23	0	0.0%	1914195	26	288377	-13.1%	1801547	29	-7653	-0.4%	1658962	108163	-6.1%	-288377
12100	The Wrekin	1101097	23	0	0.0%	1065251	26	-1551	-0.1%	1147697	30	213434	-15.7%	938568	-33840	-3.5%	-213434
12300	Angus	431447	57	0	0.0%	421282	60	0	0.0%	353041	53	-82835	-19.0%	348446	-71314	-17.0%	-82835
10903	Fenham	422843	21	-8228	-1.9%	390002	24	-62424	-13.8%	449503	27	0	0.0%	378093	-43555	-10.3%	-62424
12600	Hannington	983634	42	0	0.0%	903324	45	-14296	-1.6%	796345	51	-50448	-6.0%	673261	-13290	-1.9%	-50448
10508	Cathcart	34133	48	37002	-52.0%	47898	52	-10667	-18.2%	73060	56	-207	-0.3%	23021	-28900	-55.7%	-37002
10413	Idle	168380	21	-7383	-4.2%	141774	24	-34303	-19.5%	175442	27	0	0.0%	139567	-33270	-19.2%	-34303
15800	Bluebell Hill	680744	43	-162	0.0%	1000039	54	-31746	-3.1%	701042	46	-832	-0.1%	637168	-3705	-0.6%	-31746
11300	Dover	430710	50	-159	0.0%	405375	53	-1	0.0%	359564	51	-30021	-7.7%	286449	-10512	-3.5%	-30021
10566	Kelvindale	9297	30	28184	-75.2%	8260	48	-10253	-55.4%	13288	52	-2446	-15.5%	3602	-10965	-75.3%	-28184
10403	Sheffield	340602	21	25020	-6.8%	322548	24	-28013	-8.0%	345955	27	0	0.0%	310708	-34485	-10.0%	-28013
10103	Reigate	414229	53	-767	-0.2%	476199	57	-27161	-5.4%	379921	60	0	0.0%	325687	-292	-0.1%	-27161
10101	Guildford	191257	43	-9867	-4.9%	179258	46	-12539	-6.5%	176554	49	-26380	-13.0%	150895	-14548	-8.8%	-26380
10406	Halifax	118253	21	22032	-15.7%	130129	24	-10487	-7.5%	140318	27	0	0.0%	114397	-24161	-17.4%	-22032
11000	Mendip	1608879	54	19050	-1.2%	1394995	58	0	0.0%	1415213	61	0	0.0%	1390478	-98	0.0%	-19050
10309	Ladder Hill	16160	26	-132	-0.8%	16076	23	0	0.0%	16286	29	-17607	-51.9%	14101	-741	-5.0%	-17607
11596	Burnham on Crouch	34045	42	0	0.0%	31223	49	-15887	-33.7%	38287	52	0	0.0%	25823	-851	-3.2%	-15887
10311	Birch Vale	28616	46	0	0.0%	12260	43	-15243	-55.4%	29370	50	0	0.0%	12234	-14999	-55.1%	-15243
13115	Ivybridge	16023	52	0	0.0%	7689	49	-14498	-65.3%	9509	48	-6031	-38.8%	7444	-7404	-49.9%	-14498
11030	Hutton	12504	55	12912	-50.8%	29361	59	0	0.0%	28997	62	0	0.0%	12486	-12804	-50.6%	-12912
10355	Dog Hill	29944	46	0	0.0%	17073	43	-12817	-42.9%	29874	50	0	0.0%	16948	-12522	-42.5%	-12817
15805	Farleigh	6360	50	-2	0.0%	4408	53	0	0.0%	252	56	-11744	-97.9%	226	-4119	-94.8%	-11744
10177	Poplar	47543	42	0	0.0%	39184	45	-599	-1.5%	58461	49	-11392	-16.3%	38094	-1018	-2.6%	-11392

Table AI-4 : Worst case impact to gross PSB coverage : Highest 25 sites

### Impact on Bilsdale ch26

The damage to the gross coverage of Bilsdale PSB on ch26 is caused by the assignment of the channel to the relay at Sheffield for use by an interleaved application. Though the damage is numerically significant, 288,377 households, it occurs well outside Bilsdale’s service area, in areas served principally by Emley Moor, Belmont and Sheffield, figure AI-3a and figure 2. No loss of coverage is predicted within Bilsdale’s DPSA, figure AI-3b. Loss to gross 3PSB coverage is also significant in terms of population but again it occurs well outside Bilsdale’s service area, figure AI-3c, and no damage occurs within the DPSA, figure AI-3d.

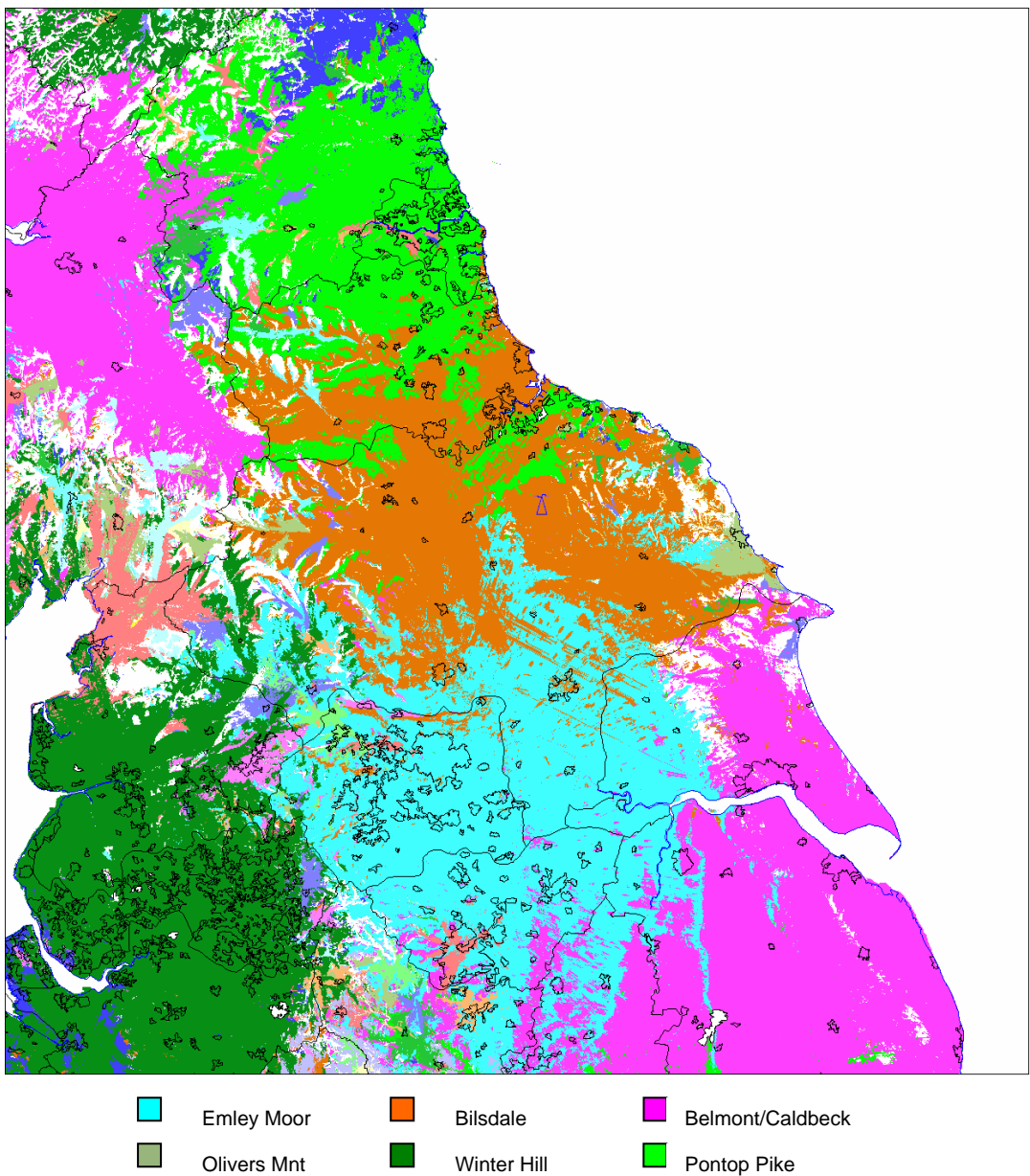
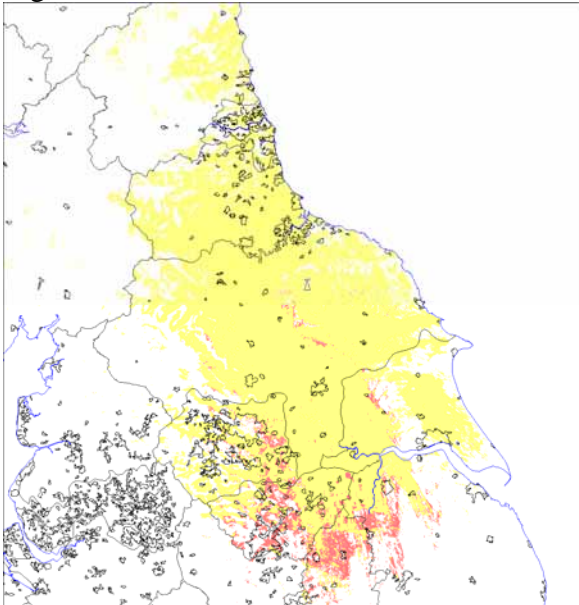


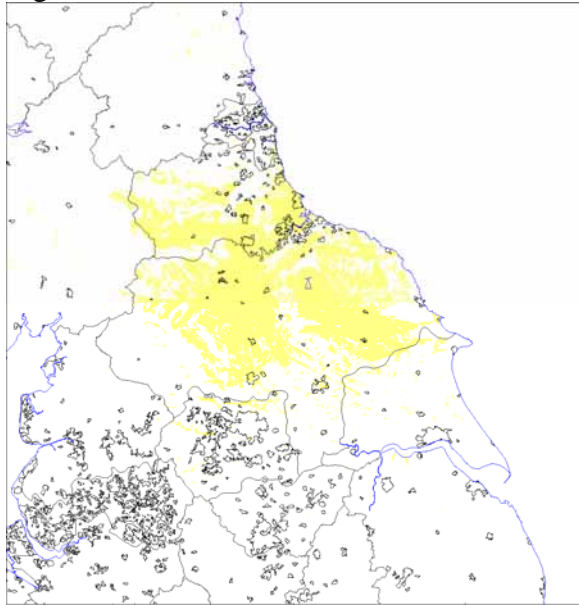
Figure AI-2 : DPSA allocation in North East England

Figure : AI-3a



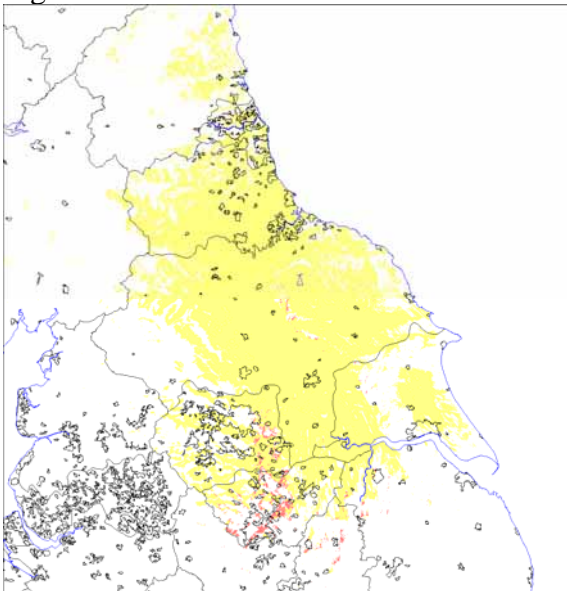
Worst case impact to gross ch26  
288,377 Households in red

Figure : AI-3b



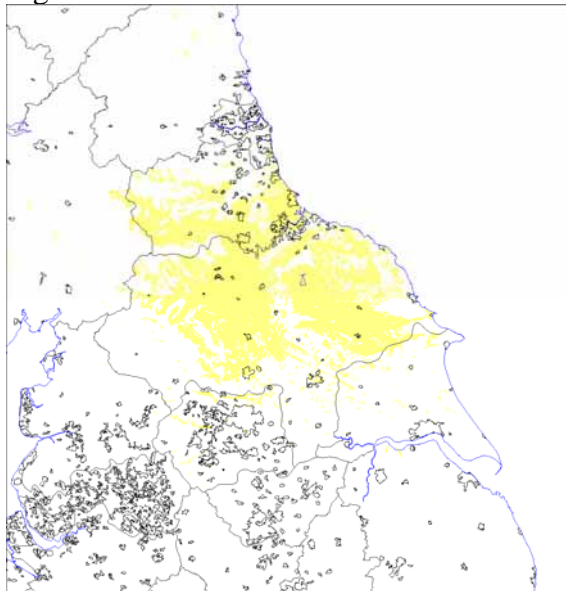
Worst case impact to gross ch26 within the  
DPSA  
0 Households

Figure : AI-3c



Worst case impact to gross 3PSB  
108,163 in red

Figure : AI-3d



Worst case impact to gross 3PSB within the  
DPSA  
0 Households

Figure AI-3 : Worst Case Impact of Interleaved Spectrum on Biltsdale

### Impact on The Wrekin ch30

The main impact to the gross coverage of The Wrekin occurs in an area between Chester and Stoke-on-Trent and around Gloucester and Cheltenham. In both cases the impact is outside the DPSA with 4 English and 2 Welsh households predicted as being impacted, Figure AI-5. The impact to gross coverage around Gloucester and Cheltenham is not only well outside the DPSA it is in an area where there are not expected to be any viewers of The Wrekin, the area being served by Ridge Hill, Malvern and Mendip. The impact around Chester is of more concern. In this area Moel-y-Parc is often assigned as the preferred station. Whilst it may provide the best service it is unlikely English viewers will watch a Welsh station. Definition of the DPSA in this area needs to be reviewed.

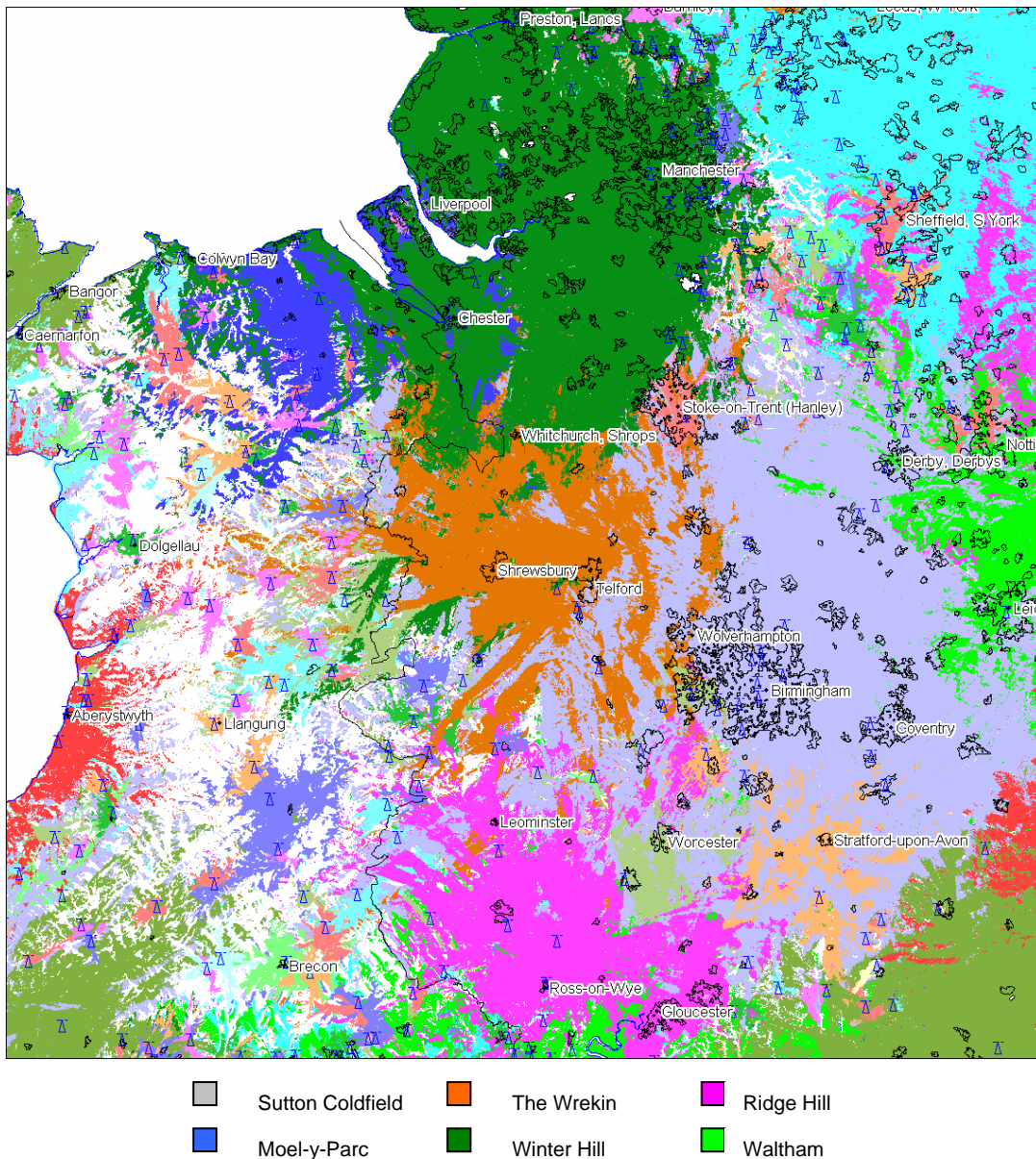
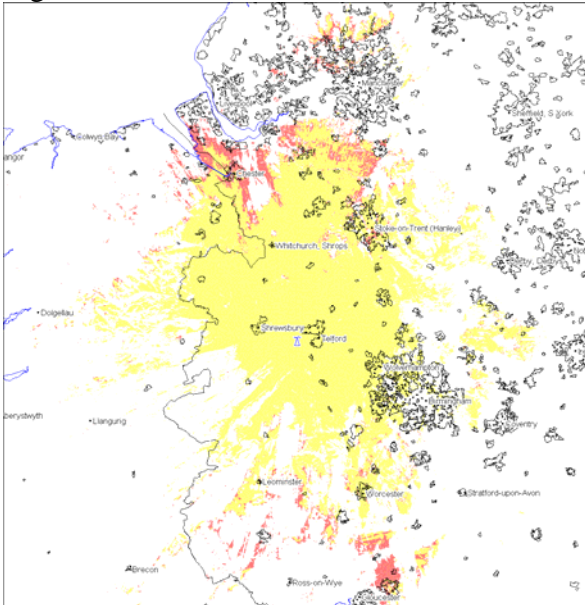


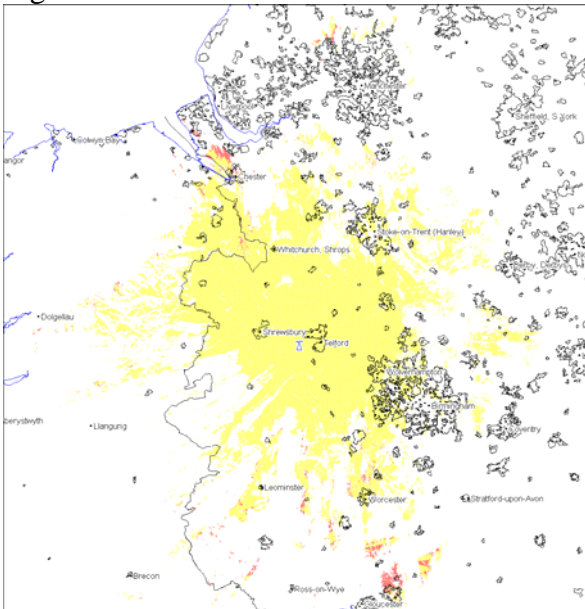
Figure AI-4 : DPSA allocation in West Midlands

Figure AI-5a



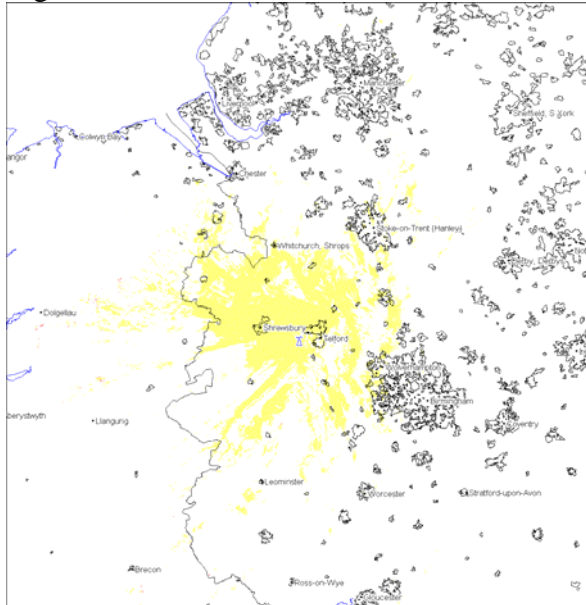
Worst case impact to gross ch30 coverage  
205,349 English and 8,085 Welsh households  
in red

Figure AI-5c



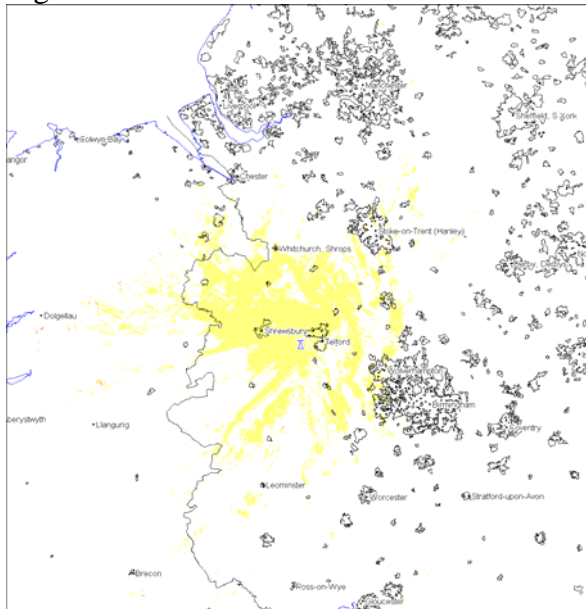
Worst case impact to gross 3PSB  
33,164 English and 676 Welsh households  
in red

Figure AI-5b



Worst case impact to net ch30 within the  
DPSA  
4 English and 2 Welsh households

Figure AI-5d



Worst case impact to net 3PSB within the  
DPSA  
4 English and 2 Welsh households

Figure AI-5 : Worst Case Impact of Interleaved Spectrum on The Wrekin

### Impact on Sheffield PSB ch24

Sheffield is a relay of the main station at Emley Moor and is designed to serve a deficiency in the town of Sheffield. Coverage of Sheffield is split between the Sheffield relay, Emley Moor and the main station at Belmont, Figure AI-6. The impact on the gross coverage of Sheffield ch24 is due to the co-channel interleaved channel allocated to Bilsdale. The impact whilst numerically significant, 28,013, is limited to households outside the DPSA within which there is no impact. A similar situation occurs with 3PSB coverage, the impact occurring outside the DPSA, Figure AI-7.

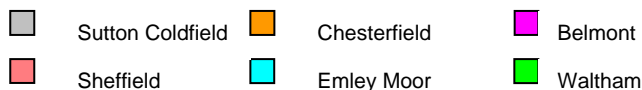
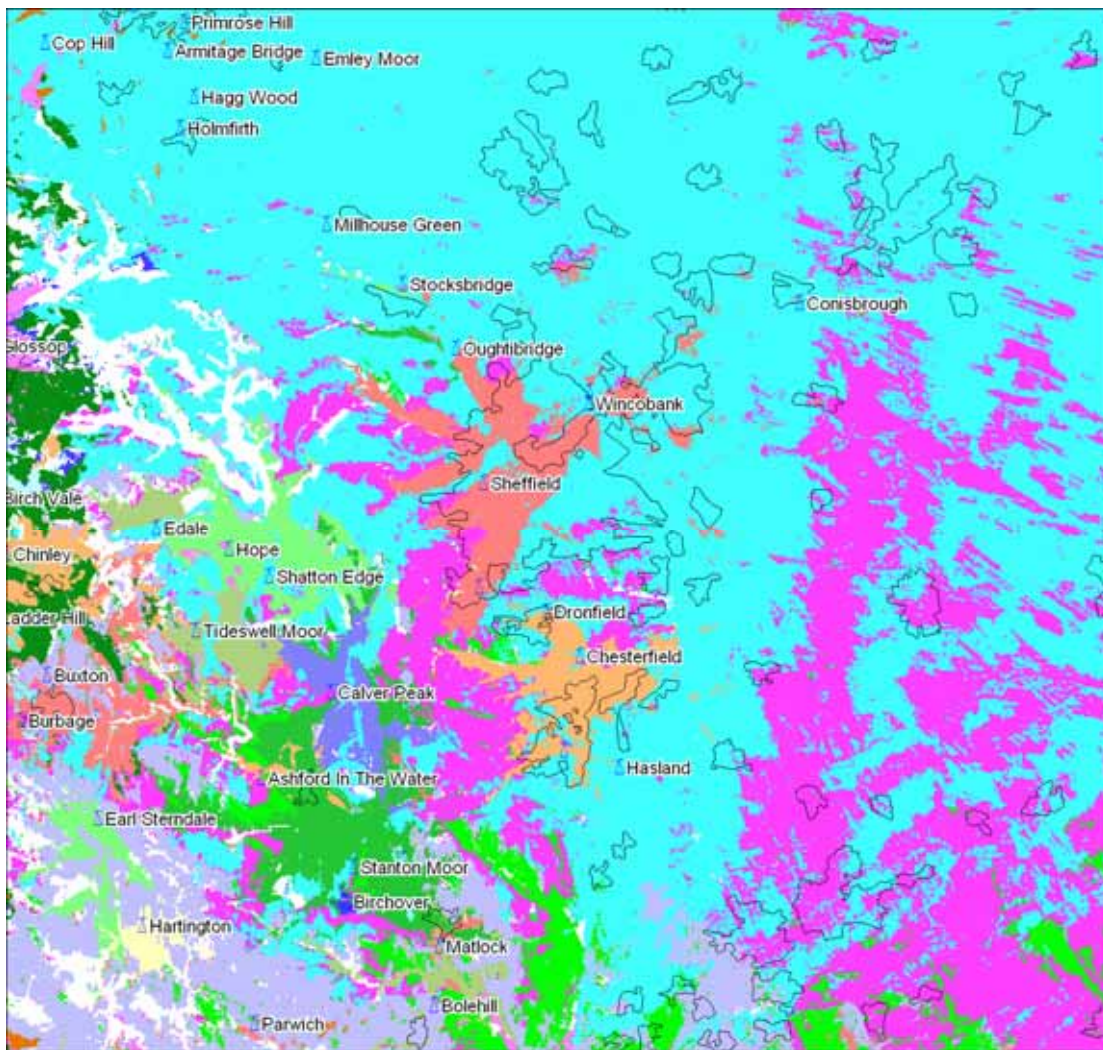
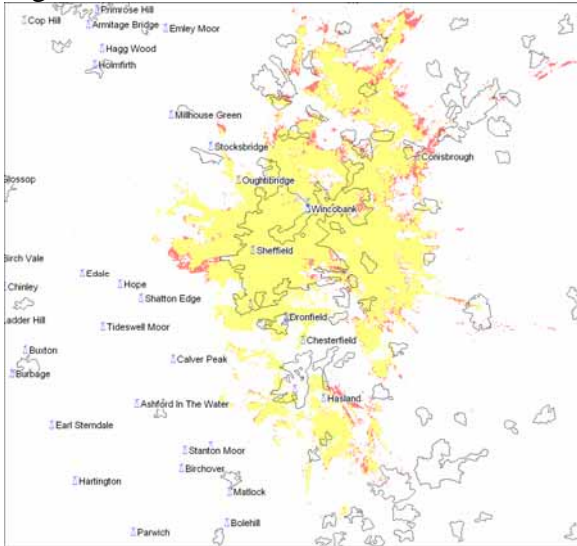


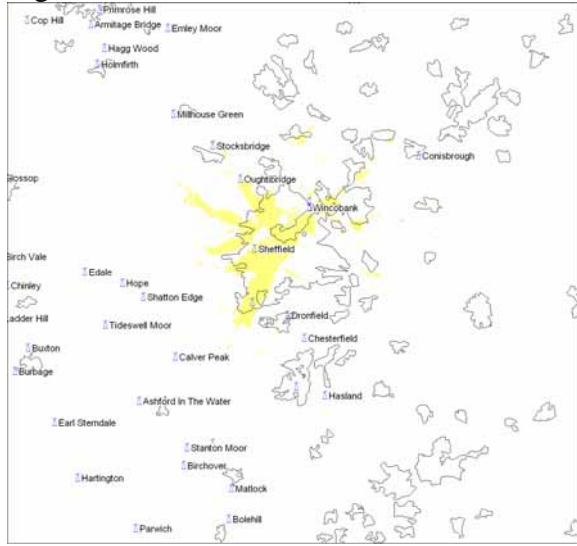
Figure AI-6 : DPSA allocation in South West Yorkshire

Figure AI-7a



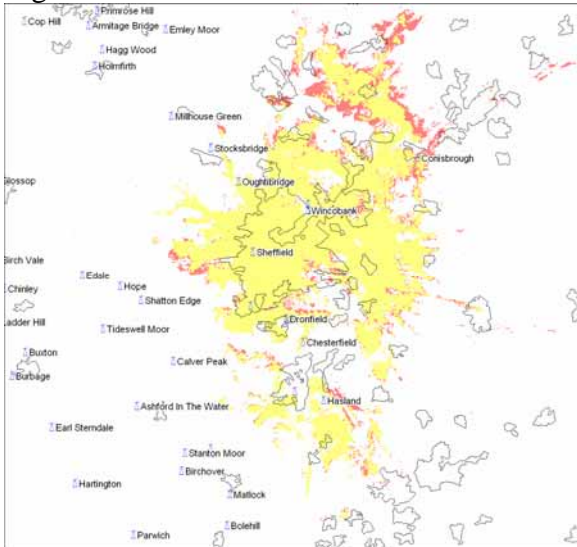
Worst case impact of gross ch24 coverage  
28,013 Households in red

Figure AI-7b



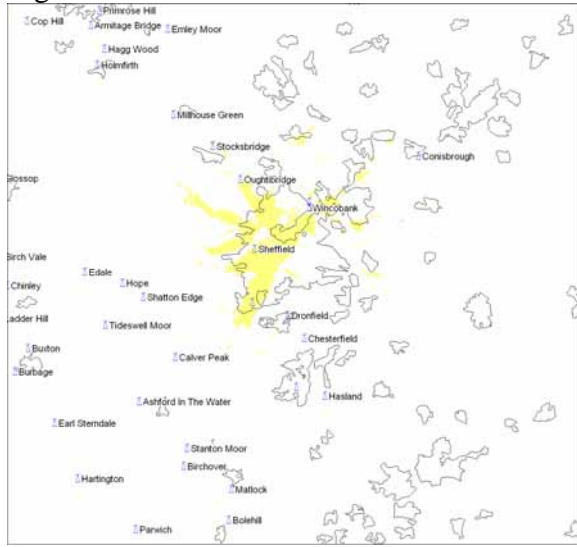
Worst case impact of net ch24 within the  
DP5A  
0 Household

Figure AI-7c



Worst case impact of gross 3PSB coverage  
34,485 Households in red

Figure AI-7d



Worst case impact of net 3PSB within the  
DP5A  
0 Households

Figure AI-7 : Worst Case Impact of Interleaved Spectrum on Sheffield

**Summary Table of Worst Case Impact of Interleaved channels on PSB multiplexes**

Results Local TV 71 sites Run1 70% Locations		PSB_1	Ch	Chg on v5.5	%Chg on v5.5	PSB_2	Ch	Chg on v5.5	%Chg on v5.5	PSB_3	Ch	Chg on v5.5	%Chg on v5.5	3CORE	Chg on v5.5	%Chg on v5.5
10100	Crystal Palace	5663694	23	0	0.0%	5593995	26	-2	0.0%	5430915	30	-5656	-0.1%	5365970	-2430	0.0%
10101	Guildford	191257	43	-9867	-4.9%	179258	46	-12539	-6.5%	176554	49	-26380	-13.0%	150895	-14548	-8.8%
10102	Hertford	43156	54	-368	-0.8%	26575	58	0	0.0%	42532	61	0	0.0%	25944	-31	-0.1%
10103	Reigate	414229	53	-767	-0.2%	476199	57	-27161	-5.4%	379921	60	0	0.0%	325687	-292	-0.1%
10104	Tunbridge Wells	107477	49	-2031	-1.9%	106073	52	-171	-0.2%	99711	47	0	0.0%	94937	-82	-0.1%
10105	Hemel Hempstead	212674	41	0	0.0%	213633	44	0	0.0%	214648	47	0	0.0%	210932	0	0.0%
10106	Woolwich	47783	53	0	0.0%	51519	57	-626	-1.2%	46222	60	0	0.0%	44784	0	0.0%
10107	High Wycombe	32711	55	-3	0.0%	35080	59	0	0.0%	35272	62	0	0.0%	32709	-3	0.0%
10109	Wooburn	16481	48	0	0.0%	17100	52	0	0.0%	22998	56	0	0.0%	15804	0	0.0%
10110	Henley	12164	54	-829	-6.4%	8820	58	0	0.0%	8995	61	0	0.0%	8669	-29	-0.3%
10111	Bishops Stortford	7415	55	0	0.0%	7420	59	0	0.0%	7365	62	0	0.0%	7320	0	0.0%
10112	Chesham	8063	43	-14	-0.2%	8073	46	0	0.0%	7943	50	0	0.0%	7695	-12	-0.2%
10113	Welwyn	8512	43	-61	-0.7%	8586	46	-1	0.0%	8136	50	0	0.0%	7856	0	0.0%
10114	Great Missenden	3409	54	-182	-5.1%	2452	58	0	0.0%	2588	61	0	0.0%	2305	-1	0.0%
10115	Mickleham	5925	54	-1123	-15.9%	5130	58	0	0.0%	5629	61	0	0.0%	4819	-235	-4.6%
10117	Kenley	28193	43	-620	-2.2%	29874	46	-127	-0.4%	53831	50	-377	-0.7%	26130	-690	-2.6%
10118	Chepping Wycombe	8138	41	0	0.0%	7988	44	0	0.0%	8009	47	0	0.0%	7971	0	0.0%
10121	Hughenden	1574	43	-163	-9.4%	1727	46	0	0.0%	1337	50	0	0.0%	1307	-7	-0.5%
10122	Forest Row	2732	45	0	0.0%	2724	48	0	0.0%	3625	56	-577	-13.7%	2624	0	0.0%
10123	Chingford	2004	48	0	0.0%	2206	52	0	0.0%	17242	56	-352	-2.0%	2003	0	0.0%
10124	Hemel Hempstead Town	8556	53	0	0.0%	9927	57	-181	-1.8%	7452	60	0	0.0%	7452	0	0.0%
10125	Walthamstow North	24423	42	0	0.0%	15997	45	-445	-2.7%	18119	49	-4784	-20.9%	13401	-853	-6.0%
10126	St Marks VP	5117	53	0	0.0%	6646	57	-407	-5.8%	6700	60	0	0.0%	5044	0	0.0%
10130	Marlow Bottom	5665	54	-51	-0.9%	3352	58	0	0.0%	3261	61	0	0.0%	3119	-2	-0.1%
10131	Cane Hill	10854	54	-16	-0.1%	8947	58	0	0.0%	10790	61	0	0.0%	8942	0	0.0%

Table AI-5 : Worst Case impact to gross coverage of Interleaved channels on PSB multiplexes

Results Local TV 71 sites Run1 70% Locations		PSB_1	Ch	Chg on v5.5	%Chg on v5.5	PSB_2	Ch	Chg on v5.5	%Chg on v5.5	PSB_3	Ch	Chg on v5.5	%Chg on v5.5	3CORE	Chg on v5.5	%Chg on v5.5
10133	New Addington	4252	54	0	0.0%	2663	58	0	0.0%	4178	61	0	0.0%	2414	0	0.0%
10134	West Wycombe	5216	43	-23	-0.4%	5225	46	0	0.0%	5161	50	-9	-0.2%	4889	-9	-0.2%
10135	Oxford	9579	53	0	0.0%	9559	57	-63	-0.7%	10055	60	0	0.0%	8855	0	0.0%
10136	Lea Bridge	9362	55	-149	-1.6%	10232	59	0	0.0%	9595	62	0	0.0%	8896	-149	-1.6%
10137	Micklefield	3364	53	0	0.0%	3452	57	-20	-0.6%	3452	60	0	0.0%	3358	0	0.0%
10138	Alexandra Palace	27807	54	-1214	-4.2%	37624	58	0	0.0%	25567	61	0	0.0%	20556	0	0.0%
10139	Dorking HP	3894	41	0	0.0%	3882	44	0	0.0%	3883	47	0	0.0%	3882	0	0.0%
10140	Caterham	3551	55	-17	-0.5%	3578	59	0	0.0%	3578	62	0	0.0%	3551	-17	-0.5%
10141	East Grinstead	2952	55	0	0.0%	4145	43	0	0.0%	3358	62	0	0.0%	2922	0	0.0%
10142	Biggin Hill	2142	42	0	0.0%	1968	45	-132	-6.3%	1740	49	-595	-25.5%	1656	-438	-20.9%
10143	Croydon Old Town	12191	48	0	0.0%	12499	52	0	0.0%	23557	56	0	0.0%	12076	0	0.0%
10147	Skirmett	268	41	0	0.0%	268	44	0	0.0%	268	47	0	0.0%	268	0	0.0%
10148	St Albans	5909	53	0	0.0%	6937	57	-72	-1.0%	3647	60	0	0.0%	3638	0	0.0%
10149	Gravesend	6712	55	0	0.0%	6707	59	0	0.0%	6789	57	-203	-2.9%	6205	-21	-0.3%
10150	Wonersh	3271	42	0	0.0%	4552	45	-79	-1.7%	2552	51	-487	-16.0%	2405	-68	-2.7%
10154	New Barnet	9202	55	0	0.0%	9211	59	0	0.0%	9149	62	0	0.0%	9109	0	0.0%
10155	Edmonton	4953	54	0	0.0%	5218	58	0	0.0%	4953	61	0	0.0%	4354	0	0.0%
10158	Finchley	7180	48	0	0.0%	7730	52	0	0.0%	10452	56	0	0.0%	7064	0	0.0%
10159	Old Coulsdon	821	48	0	0.0%	786	52	0	0.0%	1781	56	0	0.0%	756	0	0.0%
10162	Kensal Town	16286	48	0	0.0%	18044	52	0	0.0%	34294	56	0	0.0%	14776	0	0.0%
10164	Hammersmith	34673	55	0	0.0%	36944	59	0	0.0%	35158	62	0	0.0%	33447	0	0.0%
10166	Hampstead Heath	1932	41	0	0.0%	1958	44	0	0.0%	1958	47	0	0.0%	1926	0	0.0%
10167	St Marks HP	3913	53	0	0.0%	5280	57	-466	-8.1%	5476	60	0	0.0%	3821	0	0.0%
10168	Assendon	429	55	0	0.0%	610	59	0	0.0%	591	62	0	0.0%	429	0	0.0%
10170	Worlds End	46008	43	0	0.0%	45989	46	0	0.0%	47758	50	-65	-0.1%	43747	-65	-0.1%

Table AI-5 : Worst Case impact to gross coverage of Interleaved channels on PSB multiplexes

Results Local TV 71 sites Run1 70% Locations		PSB_1	Ch	Chg on v5.5	%Chg on v5.5	PSB_2	Ch	Chg on v5.5	%Chg on v5.5	PSB_3	Ch	Chg on v5.5	%Chg on v5.5	3CORE	Chg on v5.5	%Chg on v5.5
10173	Orpington	16503	55	-343	-2.0%	17131	59	0	0.0%	16597	62	0	0.0%	16123	-298	-1.8%
10174	Greenwich	2872	48	0	0.0%	3428	52	0	0.0%	13149	56	0	0.0%	2825	0	0.0%
10177	Poplar	47543	42	0	0.0%	39184	45	-599	-1.5%	58461	49	11392	-16.3%	38094	-1018	-2.6%
10179	Dorking VP	1886	41	0	0.0%	1886	44	0	0.0%	1868	47	0	0.0%	1868	0	0.0%
10180	Farningham	1147	48	0	0.0%	1148	52	0	0.0%	1164	56	-25	-2.1%	998	0	0.0%
10184	Sutton HP	874	55	0	0.0%	874	59	0	0.0%	874	62	0	0.0%	874	0	0.0%
10185	Sutton VP	11222	55	0	0.0%	11676	59	0	0.0%	11828	62	0	0.0%	11184	0	0.0%
10200	Sutton Coldfield	3392206	43	11139	-0.3%	3374265	46	-64	0.0%	3266581	50	-1511	0.0%	3220776	-5842	-0.2%
10201	Kinver	2110	48	-1	0.0%	2139	52	0	0.0%	930	56	-1736	-65.1%	930	-1178	-55.9%
10202	Kidderminster	49547	54	0	0.0%	48783	58	0	0.0%	49445	61	0	0.0%	48736	0	0.0%
10203	Brierley Hill	139607	53	0	0.0%	135713	57	-380	-0.3%	137159	60	0	0.0%	132654	-227	-0.2%
10205	Edgbaston	26104	21	-545	-2.0%	27026	24	0	0.0%	27277	27	0	0.0%	26035	-443	-1.7%
10206	Bromsgrove	79126	23	0	0.0%	79658	26	-1	0.0%	77612	30	-6027	-7.2%	74402	-2554	-3.3%
10207	Malvern	117055	53	0	0.0%	112582	57	-1065	-0.9%	117551	60	0	0.0%	111443	-944	-0.8%
10208	Lark Stoke	150076	23	0	0.0%	151786	26	-17	0.0%	146103	30	-6932	-4.5%	139194	-3644	-2.6%
10210	Leek	13643	22	0	0.0%	13659	25	0	0.0%	13712	28	0	0.0%	13593	0	0.0%
10211	Fenton	171149	21	-282	-0.2%	167850	24	-50	0.0%	166364	27	0	0.0%	165848	-18	0.0%
10212	Ashbourne	5051	22	0	0.0%	5058	25	0	0.0%	5055	28	0	0.0%	5046	0	0.0%
10214	Hartington	219	48	-2	-0.9%	220	52	0	0.0%	284	56	0	0.0%	217	-2	-0.9%
10216	Over Norton	2474	48	-161	-6.1%	2628	52	0	0.0%	3038	56	0	0.0%	2474	-125	-4.8%
10217	Bretch Hill	12835	48	-744	-5.5%	13596	52	0	0.0%	20059	56	-5	0.0%	12809	-723	-5.3%
10219	Icomb Hill	2288	22	0	0.0%	2323	25	0	0.0%	2351	28	0	0.0%	2284	0	0.0%
10221	Leamington Spa	32964	55	-616	-1.8%	34050	59	0	0.0%	34312	62	-228	-0.7%	32943	-637	-1.9%
10222	Kenilworth	3637	53	0	0.0%	2400	57	0	0.0%	3695	60	0	0.0%	2387	0	0.0%
10227	Allesley Park	28079	22	0	0.0%	28309	25	0	0.0%	28546	28	0	0.0%	28059	0	0.0%

Table AI-5 : Worst Case impact to gross coverage of Interleaved channels on PSB multiplexes

Results Local TV 71 sites Run1 70% Locations		PSB_1	Ch	Chg on v5.5	%Chg on v5.5	PSB_2	Ch	Chg on v5.5	%Chg on v5.5	PSB_3	Ch	Chg on v5.5	%Chg on v5.5	3CORE	Chg on v5.5	%Chg on v5.5
10228	Cheadle	4885	48	-238	-4.6%	5162	52	-1	0.0%	5133	56	-115	-2.2%	4795	-177	-3.6%
10229	Tenbury Wells	2345	53	0	0.0%	2237	57	0	0.0%	2333	60	0	0.0%	2222	0	0.0%
10230	Redditch	5934	22	0	0.0%	5972	25	0	0.0%	5995	28	-22	-0.4%	5934	0	0.0%
10232	Ironbridge	1086	54	0	0.0%	1086	58	0	0.0%	1072	61	0	0.0%	1072	0	0.0%
10233	Guiting Power	375	41	0	0.0%	375	44	0	0.0%	375	47	0	0.0%	375	0	0.0%
10235	Ambergate	11154	22	0	0.0%	11548	25	0	0.0%	11817	28	0	0.0%	11145	0	0.0%
10236	Ipstones Edge	379	53	0	0.0%	367	57	0	0.0%	378	60	0	0.0%	367	0	0.0%
10237	Whittingslow	2666	53	0	0.0%	2688	57	0	0.0%	2637	60	0	0.0%	2627	0	0.0%
10238	Oakamoor	443	21	-1	-0.2%	447	24	0	0.0%	442	27	0	0.0%	432	-1	-0.2%
10242	Turves Green	9068	55	-	-12.1%	10297	59	0	0.0%	9541	62	-867	-8.3%	8687	-1610	-15.6%
10243	Brailes	863	21	0	0.0%	867	24	0	0.0%	888	27	0	0.0%	863	0	0.0%
10245	Bridgnorth	3554	55	0	0.0%	3557	59	0	0.0%	3659	62	0	0.0%	3550	0	0.0%
10247	Woodford Halse	1459	22	0	0.0%	1460	25	0	0.0%	1461	28	0	0.0%	1459	0	0.0%
10249	Winshill	6380	53	0	0.0%	3470	57	0	0.0%	6444	60	0	0.0%	2214	0	0.0%
10251	Gravelly Hill	2363	55	-	-44.9%	4493	59	0	0.0%	4687	62	-5	-0.1%	2363	-1929	-44.9%
10252	Harborne	13877	48	-	-9.0%	16673	52	-181	-1.1%	10891	56	-7606	-41.1%	8224	-3397	-29.2%
10253	Repton	2912	53	0	0.0%	851	57	0	0.0%	2938	60	0	0.0%	820	0	0.0%
10254	Earl Sterndale	457	54	0	0.0%	456	58	0	0.0%	456	61	0	0.0%	455	0	0.0%
10255	Winchcombe	1826	54	0	0.0%	1825	58	0	0.0%	1829	61	0	0.0%	1825	0	0.0%
10256	Hamstead	5435	21	0	0.0%	5454	24	0	0.0%	5454	27	0	0.0%	5435	0	0.0%
10257	Queslett	1692	54	0	0.0%	1692	58	0	0.0%	1692	61	0	0.0%	1692	0	0.0%
10258	Long Compton	328	22	0	0.0%	328	25	0	0.0%	328	28	0	0.0%	328	0	0.0%
10259	Perry Beeches	3688	22	0	0.0%	3757	25	0	0.0%	3790	28	0	0.0%	3688	0	0.0%
10260	Rugeley	8384	48	-3	0.0%	8587	52	0	0.0%	3203	56	-3	-0.1%	3156	-4	-0.1%
10266	Gib Heath	4775	55	-	-58.2%	11122	59	0	0.0%	11238	62	-523	-4.4%	4746	-6374	-57.3%

Table AI-5 : Worst Case impact to gross coverage of Interleaved channels on PSB multiplexes

Results Local TV 71 sites Run1 70% Locations		PSB_1	Ch	Chg on v5.5	%Chg on v5.5	PSB_2	Ch	Chg on v5.5	%Chg on v5.5	PSB_3	Ch	Chg on v5.5	%Chg on v5.5	3CORE	Chg on v5.5	%Chg on v5.5
10300	Winter Hill	3171362	62	-	-0.2%	3240524	59	0	0.0%	3067737	54	0	0.0%	3038374	-6	0.0%
10301	Darwen	36536	45	0	0.0%	36844	49	0	0.0%	36377	42	0	0.0%	36334	0	0.0%
10302	Pendle Forest	121678	28	0	0.0%	121579	25	0	0.0%	122161	22	0	0.0%	121053	0	0.0%
10303	Haslingden	262545	26	-42	0.0%	257843	23	0	0.0%	300660	29	10862	-3.5%	246713	-1176	-0.5%
10304	Elton	2917	27	0	0.0%	2953	24	0	0.0%	2803	21	0	0.0%	2756	0	0.0%
10306	Saddleworth	90292	45	-	-1.1%	93625	49	0	0.0%	89577	42	0	0.0%	88314	-692	-0.8%
10307	Storeton	244349	28	0	0.0%	245087	25	0	0.0%	255668	22	0	0.0%	240373	0	0.0%
10308	Bacup	8947	46	0	0.0%	8966	43	-2	0.0%	8909	50	0	0.0%	8907	-2	0.0%
10309	Ladder Hill	16160	26	-132	-0.8%	16076	23	0	0.0%	16286	29	17607	-51.9%	14101	-741	-5.0%
10310	Bidston	13882	44	0	0.0%	13840	41	0	0.0%	13937	47	0	0.0%	13806	0	0.0%
10311	Birch Vale	28616	46	0	0.0%	12260	43	15243	-55.4%	29370	50	0	0.0%	12234	14999	-55.1%
10312	Whitworth	24271	28	0	0.0%	23781	25	0	0.0%	23258	22	0	0.0%	22751	0	0.0%
10313	Glossop	23841	28	0	0.0%	23454	25	0	0.0%	23251	22	0	0.0%	23024	0	0.0%
10314	Buxton	11107	27	0	0.0%	11031	24	-72	-0.6%	11539	21	-52	-0.4%	11015	-84	-0.8%
10315	Moss Bank	3153	27	0	0.0%	3153	24	0	0.0%	3125	21	0	0.0%	3125	0	0.0%
10317	Chaigley	2389	27	0	0.0%	2243	24	-10	-0.4%	2189	21	0	0.0%	2143	-9	-0.4%
10318	Trawden	6224	53	0	0.0%	5995	60	0	0.0%	6412	57	-76	-1.2%	5992	0	0.0%
10319	Whalley	11500	46	0	0.0%	11461	43	-7	-0.1%	11535	50	0	0.0%	11436	-7	-0.1%
10322	Littleborough	22777	27	0	0.0%	22723	24	0	0.0%	22487	21	-1	0.0%	22301	-1	0.0%
10325	North Oldham	89068	27	0	0.0%	87908	24	-46	-0.1%	87021	21	0	0.0%	86485	0	0.0%
10326	Macclesfield	19621	28	0	0.0%	19540	25	0	0.0%	19443	22	0	0.0%	19391	0	0.0%
10327	Congleton	9778	44	0	0.0%	9785	41	0	0.0%	9758	47	0	0.0%	9754	0	0.0%
10328	Manchester Hulme	7827	44	0	0.0%	7827	41	0	0.0%	7932	47	0	0.0%	7827	0	0.0%
10330	Burbage	4952	47	0	0.0%	4918	41	0	0.0%	4926	44	0	0.0%	4900	0	0.0%
10331	Oakenhead	6882	44	0	0.0%	6890	41	0	0.0%	6887	47	0	0.0%	6872	0	0.0%

Table AI-5 : Worst Case impact to gross coverage of Interleaved channels on PSB multiplexes

Results Local TV 71 sites Run1 70% Locations		PSB_1	Ch	Chg on v5.5	%Chg on v5.5	PSB_2	Ch	Chg on v5.5	%Chg on v5.5	PSB_3	Ch	Chg on v5.5	%Chg on v5.5	3CORE	Chg on v5.5	%Chg on v5.5
10332	Whitewell	3246	53	0	0.0%	3161	60	0	0.0%	3177	57	0	0.0%	3161	0	0.0%
10333	Delph	2097	26	0	0.0%	2133	23	0	0.0%	2224	29	0	0.0%	2075	0	0.0%
10334	Far Highfield	687	52	0	0.0%	791	56	-37	-4.5%	797	48	0	0.0%	683	-3	-0.4%
10335	Lancaster	156710	27	0	0.0%	156426	24	-49	0.0%	154721	21	-277	-0.2%	153730	-101	-0.1%
10336	Kendal	27763	60	0	0.0%	27795	53	0	0.0%	27987	57	0	0.0%	27425	0	0.0%
10338	Windermere	9397	41	0	0.0%	9273	47	0	0.0%	9333	44	0	0.0%	9262	0	0.0%
10339	Blackburn	8364	46	0	0.0%	8341	43	0	0.0%	8478	50	0	0.0%	8258	0	0.0%
10341	Prestbury	1568	46	0	0.0%	1084	43	-468	-30.2%	1572	50	0	0.0%	1084	-468	-30.2%
10342	Stockport	3857	24	0	0.0%	3816	21	0	0.0%	3846	27	0	0.0%	3801	0	0.0%
10344	Millom Park	8136	28	0	0.0%	8086	25	0	0.0%	8566	22	0	0.0%	8086	0	0.0%
10345	Coniston	628	24	0	0.0%	629	27	0	0.0%	635	21	0	0.0%	628	0	0.0%
10346	Lees	5513	28	0	0.0%	5466	25	0	0.0%	5402	22	0	0.0%	5399	0	0.0%
10347	Ramsbottom	39431	53	0	0.0%	35747	60	0	0.0%	36497	57	-1838	-4.8%	34909	-474	-1.3%
10348	Dalton	4060	46	0	0.0%	4059	43	0	0.0%	4039	50	0	0.0%	4025	0	0.0%
10349	Over Biddulph	6192	57	0	0.0%	6183	53	0	0.0%	6195	60	0	0.0%	6175	0	0.0%
10350	Hawkshead	2265	23	0	0.0%	2290	29	0	0.0%	2265	26	0	0.0%	2257	0	0.0%
10352	Haughton Green	1147	46	0	0.0%	945	43	-202	-17.6%	1147	50	0	0.0%	945	-202	-17.6%
10353	Parbold	2703	44	0	0.0%	2703	41	0	0.0%	2728	47	0	0.0%	2703	0	0.0%
10354	Chinley	2442	53	0	0.0%	2435	60	0	0.0%	2429	57	0	0.0%	2426	0	0.0%
10355	Dog Hill	29944	46	0	0.0%	17073	43	12817	-42.9%	29874	50	0	0.0%	16948	12522	-42.5%
10356	Barrow Town Hall	4031	44	0	0.0%	4207	41	0	0.0%	4029	47	0	0.0%	4029	0	0.0%
10357	Roose VP	1708	22	0	0.0%	1709	28	0	0.0%	1708	25	0	0.0%	1708	0	0.0%
10358	Romiley	5463	44	0	0.0%	5449	41	0	0.0%	5462	47	0	0.0%	5433	0	0.0%
10359	Bollington	2614	27	0	0.0%	2456	24	0	0.0%	2368	21	0	0.0%	2362	0	0.0%
10360	Langley	2896	27	0	0.0%	2878	24	0	0.0%	2775	21	0	0.0%	2740	0	0.0%

Table AI-5 : Worst Case impact to gross coverage of Interleaved channels on PSB multiplexes

Results Local TV 71 sites Run1 70% Locations		PSB_1	Ch	Chg on v5.5	%Chg on v5.5	PSB_2	Ch	Chg on v5.5	%Chg on v5.5	PSB_3	Ch	Chg on v5.5	%Chg on v5.5	3CORE	Chg on v5.5	%Chg on v5.5
10361	Kendal Fell	11764	43	0	0.0%	11766	50	0	0.0%	11758	46	0	0.0%	11736	0	0.0%
10362	Ribblesdale	213	44	0	0.0%	213	41	0	0.0%	213	47	0	0.0%	213	0	0.0%
10364	Backbarrow	581	53	0	0.0%	582	60	0	0.0%	584	57	-3	-0.5%	576	0	0.0%
10365	West Kirby	5878	27	0	0.0%	6502	24	0	0.0%	5775	21	0	0.0%	5679	0	0.0%
10366	Brook Bottom	5543	53	0	0.0%	6186	60	0	0.0%	6260	57	0	0.0%	5432	0	0.0%
10368	Mottram In Longdendale	6897	46	0	0.0%	6352	43	-485	-7.1%	6852	50	0	0.0%	6307	-485	-7.1%
10370	Stavely In Cartmel	533	46	0	0.0%	535	43	0	0.0%	532	50	0	0.0%	532	0	0.0%
10371	Penny Bridge	702	26	0	0.0%	700	23	0	0.0%	733	29	0	0.0%	697	0	0.0%
10372	Cartmel	328	28	0	0.0%	328	25	0	0.0%	328	22	0	0.0%	328	0	0.0%
10373	Urswick	348	44	0	0.0%	348	41	0	0.0%	362	47	0	0.0%	348	0	0.0%
10374	Melling VP	1222	57	0	0.0%	1219	60	0	0.0%	1219	53	0	0.0%	1214	0	0.0%
10376	Austwick	459	45	0	0.0%	460	49	0	0.0%	458	42	0	0.0%	458	0	0.0%
10377	Chatburn	493	26	0	0.0%	493	23	0	0.0%	505	29	0	0.0%	493	0	0.0%
10378	Woodnook	9456	45	0	0.0%	9545	49	0	0.0%	9478	42	0	0.0%	9454	0	0.0%
10379	Melling HP	200	57	0	0.0%	200	60	0	0.0%	200	53	0	0.0%	200	0	0.0%
10380	Newchurch	4202	21	-2	0.0%	3565	24	0	0.0%	3535	27	0	0.0%	3534	0	0.0%
10382	Roose HP	10271	22	0	0.0%	9918	28	0	0.0%	9883	25	0	0.0%	9818	0	0.0%
10385	Middleton	8095	22	0	0.0%	8083	25	0	0.0%	8094	28	0	0.0%	8051	0	0.0%
10387	Wardle	11783	28	0	0.0%	11703	25	0	0.0%	11593	22	0	0.0%	11565	0	0.0%
10388	Norden	7469	53	0	0.0%	7459	57	-6	-0.1%	6980	60	0	0.0%	6923	0	0.0%
10389	Brinscall	1079	21	0	0.0%	1073	24	0	0.0%	1080	27	0	0.0%	1071	0	0.0%
10390	Broadbottom	538	45	0	0.0%	537	42	0	0.0%	538	49	0	0.0%	536	0	0.0%
10391	Portwood	2166	28	0	0.0%	2134	25	0	0.0%	1971	22	0	0.0%	1916	0	0.0%
10394	Whaley Bridge	1722	45	0	0.0%	1707	49	0	0.0%	1722	42	0	0.0%	1705	0	0.0%
10396	Walton Le Dale	5150	27	0	0.0%	4698	24	-211	-4.3%	4713	21	-88	-1.8%	4555	-246	-5.1%

Table AI-5 : Worst Case impact to gross coverage of Interleaved channels on PSB multiplexes

Results Local TV 71 sites Run1 70% Locations		PSB_1	Ch	Chg on v5.5	%Chg on v5.5	PSB_2	Ch	Chg on v5.5	%Chg on v5.5	PSB_3	Ch	Chg on v5.5	%Chg on v5.5	3CORE	Chg on v5.5	%Chg on v5.5
10400	Emley Moor	2679138	41	0	0.0%	2589384	44	-428	0.0%	2579237	47	0	0.0%	2547624	-262	0.0%
10401	Wharfedale	42728	22	0	0.0%	42531	25	-23	-0.1%	42859	28	0	0.0%	41993	0	0.0%
10403	Sheffield	340602	21	-	-6.8%	322548	24	28013	-8.0%	345955	27	0	0.0%	310708	34485	-10.0%
10404	Skipton	24821	42	0	0.0%	24513	45	-140	-0.6%	24559	49	0	0.0%	24402	-88	-0.4%
10405	Chesterfield	74510	23	0	0.0%	61325	26	-	-14.9%	65427	29	0	0.0%	57693	-6134	-9.6%
10406	Halifax	118253	21	-	-15.7%	130129	24	-	-7.5%	140318	27	0	0.0%	114397	24161	-17.4%
10407	Keighley	100787	54	0	0.0%	99269	58	0	0.0%	99146	61	0	0.0%	98483	0	0.0%
10408	Shatton Edge	3046	54	0	0.0%	3046	58	0	0.0%	3044	61	0	0.0%	3044	0	0.0%
10409	Hebden Bridge	6512	22	0	0.0%	6522	25	0	0.0%	6523	28	0	0.0%	6501	0	0.0%
10410	Ripponden	4551	54	0	0.0%	4466	58	0	0.0%	4494	61	0	0.0%	4466	0	0.0%
10411	Cop Hill	25920	22	0	0.0%	25849	25	0	0.0%	25903	28	0	0.0%	25161	0	0.0%
10413	Idle	168380	21	-	-4.2%	141774	24	-	-19.5%	175442	27	0	0.0%	139567	33270	-19.2%
10414	Headingley	8387	54	0	0.0%	8616	58	0	0.0%	8551	61	0	0.0%	8340	0	0.0%
10415	Beecroft Hill	169327	55	-	-3.6%	173113	59	0	0.0%	179262	62	-42	0.0%	167712	-4877	-2.8%
10417	Oxenhope	17059	22	0	0.0%	17159	25	0	0.0%	17257	28	0	0.0%	16996	0	0.0%
10418	Calver Peak	3471	42	0	0.0%	3453	45	0	0.0%	3460	49	0	0.0%	3450	0	0.0%
10422	Tideswell Moor	3668	60	0	0.0%	3803	53	0	0.0%	4792	57	0	0.0%	3335	0	0.0%
10426	Hope	1411	22	0	0.0%	1410	25	0	0.0%	1410	28	0	0.0%	1410	0	0.0%
10427	Addingham	6428	43	0	0.0%	6438	46	0	0.0%	6446	50	0	0.0%	6403	0	0.0%
10428	Luddenden	10124	57	0	0.0%	7057	60	0	0.0%	5972	53	0	0.0%	5809	0	0.0%
10431	Dronfield	3469	55	-	-4.7%	3635	59	0	0.0%	3684	62	0	0.0%	3448	-171	-4.7%
10432	Hasland	6796	53	0	0.0%	6574	57	0	0.0%	6973	60	0	0.0%	5372	0	0.0%
10433	Edale	119	53	0	0.0%	119	57	0	0.0%	119	60	0	0.0%	119	0	0.0%
10435	Totley Rise	7559	48	0	0.0%	8428	51	0	0.0%	8484	52	0	0.0%	7510	0	0.0%
10441	Cullingworth	8385	55	-	-0.5%	8412	59	0	0.0%	8628	62	0	0.0%	8362	0	0.0%

Table AI-5 : Worst Case impact to gross coverage of Interleaved channels on PSB multiplexes

Results Local TV 71 sites Run1 70% Locations		PSB_1	Ch	Chg on v5.5	%Chg on v5.5	PSB_2	Ch	Chg on v5.5	%Chg on v5.5	PSB_3	Ch	Chg on v5.5	%Chg on v5.5	3CORE	Chg on v5.5	%Chg on v5.5
10442	Skipton Town	8330	21	0	0.0%	8329	24	-1	0.0%	8344	27	0	0.0%	8328	-1	0.0%
10443	Batley	5617	54	0	0.0%	5659	58	0	0.0%	5687	61	0	0.0%	5600	0	0.0%
10444	Heyshaw	10645	53	0	0.0%	16848	57	0	0.0%	10668	60	0	0.0%	10465	0	0.0%
10446	Primrose Hill	50315	57	0	0.0%	40200	60	0	0.0%	33003	53	0	0.0%	32899	0	0.0%
10447	Armitage Bridge	11347	54	0	0.0%	11265	58	0	0.0%	11386	61	0	0.0%	11188	0	0.0%
10448	Wincobank	6597	55	-33	-0.5%	6458	59	0	0.0%	6669	62	-36	-0.5%	6336	-35	-0.5%
10449	Holmfirth	2324	54	0	0.0%	2301	58	0	0.0%	2311	61	0	0.0%	2282	0	0.0%
10450	Hagg Wood	15737	55	0	0.0%	15326	59	0	0.0%	15821	62	0	0.0%	15316	0	0.0%
10452	Keighley Town	10505	23	0	0.0%	10107	26	-31	-0.3%	10172	29	0	0.0%	9984	-22	-0.2%
10453	Sutton In Craven	6374	23	0	0.0%	6380	26	-12	-0.2%	6196	29	0	0.0%	5988	0	0.0%
10455	Cragg Vale	1679	54	0	0.0%	1677	58	0	0.0%	1677	61	0	0.0%	1677	0	0.0%
10456	Lydgate	1894	23	0	0.0%	1890	26	0	0.0%	1883	29	0	0.0%	1856	0	0.0%
10457	Stocksbridge	5647	54	0	0.0%	5652	58	0	0.0%	5669	61	0	0.0%	5643	0	0.0%
10458	Oughtibridge	9690	55	0	0.0%	9192	59	0	0.0%	9337	62	-3	0.0%	9139	-3	0.0%
10459	Holmfield	6509	55	0	0.0%	6417	59	0	0.0%	6731	62	0	0.0%	6386	0	0.0%
10460	Grassington	1484	23	0	0.0%	1483	26	0	0.0%	1489	29	0	0.0%	1482	0	0.0%
10461	Cowling	2467	42	0	0.0%	1671	45	-795	-32.2%	2480	49	0	0.0%	1671	-795	-32.2%
10463	Cornholme	3304	54	0	0.0%	3267	58	0	0.0%	3262	61	0	0.0%	3262	0	0.0%
10464	Walsden	6375	57	0	0.0%	6288	60	0	0.0%	6291	53	0	0.0%	6285	0	0.0%
10465	Todmorden	6833	42	0	0.0%	6564	45	-210	-3.1%	6731	49	0	0.0%	6522	-191	-2.8%
10466	Walsden South	1178	43	-64	-5.2%	1240	46	0	0.0%	1238	50	0	0.0%	1176	-62	-5.0%
10467	Bradford West	9493	55	-562	-5.6%	9656	59	0	0.0%	10251	62	0	0.0%	9459	-96	-1.0%
10468	Copley	2079	55	0	0.0%	2063	59	0	0.0%	2084	62	0	0.0%	2030	0	0.0%
10469	Kettlewell	447	42	0	0.0%	447	45	0	0.0%	445	49	0	0.0%	445	0	0.0%
10470	Brockwell	6435	49	0	0.0%	6291	42	0	0.0%	6350	45	-42	-0.7%	6266	-13	-0.2%

Table AI-5 : Worst Case impact to gross coverage of Interleaved channels on PSB multiplexes

Results Local TV 71 sites Run1 70% Locations		PSB_1	Ch	Chg on v5.5	%Chg on v5.5	PSB_2	Ch	Chg on v5.5	%Chg on v5.5	PSB_3	Ch	Chg on v5.5	%Chg on v5.5	3CORE	Chg on v5.5	%Chg on v5.5
10472	Conisbrough	1288	53	0	0.0%	2816	57	0	0.0%	1235	60	0	0.0%	1215	0	0.0%
10473	Elland	7212	54	0	0.0%	7175	58	0	0.0%	7270	61	0	0.0%	7172	0	0.0%
10474	Longwood Edge	5216	55	0	0.0%	5216	59	0	0.0%	5216	62	0	0.0%	5216	0	0.0%
10476	Millhouse Green	909	54	0	0.0%	911	58	0	0.0%	916	61	0	0.0%	909	0	0.0%
10479	Blackburn In Rotherham	775	53	0	0.0%	1430	57	0	0.0%	767	60	0	0.0%	675	0	0.0%
10480	Cleckheaton	5259	55	0	0.0%	5167	59	0	0.0%	5216	62	0	0.0%	5104	0	0.0%
10483	Wheatley	4552	54	0	0.0%	4525	58	0	0.0%	4539	61	0	0.0%	4521	0	0.0%
10500	Black Hill	1409652	43	0	0.0%	1398042	46	0	0.0%	1400398	50	-840	-0.1%	1392295	-270	0.0%
10501	Kilmacolm	1982	21	-1	-0.1%	2004	24	0	0.0%	2004	27	0	0.0%	1982	0	0.0%
10502	South Knapdale	2591	53	0	0.0%	2580	57	0	0.0%	2569	60	0	0.0%	2565	0	0.0%
10503	Biggar	2300	22	0	0.0%	2309	25	0	0.0%	2317	28	0	0.0%	2299	0	0.0%
10504	Abington	307	53	0	0.0%	307	57	0	0.0%	308	60	0	0.0%	307	0	0.0%
10505	Glasgow West Central	144556	62	0	0.0%	148717	55	0	0.0%	144827	59	0	0.0%	142839	0	0.0%
10506	Killearn	3941	55	0	0.0%	3940	59	0	0.0%	3937	62	0	0.0%	3936	0	0.0%
10507	Callander	1651	22	0	0.0%	1650	25	0	0.0%	1645	28	0	0.0%	1645	0	0.0%
10508	Cathcart	34133	48	-	-	47898	52	10667	-18.2%	73060	56	-207	-0.3%	23021	28900	-55.7%
10510	Torosay	8649	22	0	0.0%	8528	25	0	0.0%	8413	28	0	0.0%	8406	0	0.0%
10512	Cow Hill	4793	43	0	0.0%	4787	46	0	0.0%	4784	50	0	0.0%	4781	0	0.0%
10513	Netherton Brae	24957	21	-1	0.0%	26348	24	0	0.0%	25712	27	0	0.0%	24826	0	0.0%
10514	Gigha Island	69	41	0	0.0%	69	44	0	0.0%	70	47	0	0.0%	69	0	0.0%
10515	Tarbert	613	21	0	0.0%	614	24	0	0.0%	610	27	0	0.0%	608	0	0.0%
10516	Easdale	242	43	0	0.0%	242	46	0	0.0%	242	50	0	0.0%	242	0	0.0%
10517	Glengorm	905	41	0	0.0%	902	44	0	0.0%	899	47	0	0.0%	890	0	0.0%
10518	Clachan	65	43	0	0.0%	65	46	0	0.0%	65	50	0	0.0%	65	0	0.0%
10519	Mallaig	497	43	0	0.0%	495	46	0	0.0%	495	50	0	0.0%	495	0	0.0%

Table AI-5 : Worst Case impact to gross coverage of Interleaved channels on PSB multiplexes

Results Local TV 71 sites Run1 70% Locations		PSB_1	Ch	Chg on v5.5	%Chg on v5.5	PSB_2	Ch	Chg on v5.5	%Chg on v5.5	PSB_3	Ch	Chg on v5.5	%Chg on v5.5	3CORE	Chg on v5.5	%Chg on v5.5
10520	Ballachulish	566	23	0	0.0%	566	26	0	0.0%	566	29	0	0.0%	566	0	0.0%
10522	Haddington	4091	54	0	0.0%	4054	58	0	0.0%	4060	61	0	0.0%	4054	0	0.0%
10523	Kinlochleven	517	55	0	0.0%	516	59	0	0.0%	516	62	0	0.0%	516	0	0.0%
10524	Onich	518	54	0	0.0%	517	58	0	0.0%	517	61	0	0.0%	517	0	0.0%
10525	Strachur	777	23	0	0.0%	777	26	0	0.0%	777	29	0	0.0%	777	0	0.0%
10526	Spean Bridge	441	21	0	0.0%	441	24	0	0.0%	441	27	0	0.0%	441	0	0.0%
10527	Oban	4055	41	0	0.0%	4055	44	0	0.0%	4053	47	0	0.0%	4052	0	0.0%
10528	Bellanoch	365	42	0	0.0%	364	45	0	0.0%	355	49	0	0.0%	355	0	0.0%
10529	Tayvallich	129	43	0	0.0%	129	46	0	0.0%	129	50	0	0.0%	129	0	0.0%
10531	Dychliemore Link	0	22	0	-	0	25	0	-	0	28	0	-	0	0	-
10532	Castlebay	226	21	0	0.0%	217	24	0	0.0%	222	27	0	0.0%	217	0	0.0%
10534	Dalmally	189	41	0	0.0%	187	44	0	0.0%	187	47	0	0.0%	187	0	0.0%
10536	Dollar	1434	54	0	0.0%	1435	58	0	0.0%	1438	61	0	0.0%	1434	0	0.0%
10537	Ravenscraig VP	9168	21	0	0.0%	9060	24	0	0.0%	8967	27	0	0.0%	8963	0	0.0%
10538	Kirkfieldbank	703	48	2500	-78.1%	3038	52	-362	-10.6%	3456	56	0	0.0%	703	-2500	-78.1%
10539	Tillicoultry	4001	53	0	0.0%	4022	57	0	0.0%	3997	60	0	0.0%	3971	0	0.0%
10541	Fintry	341	24	0	0.0%	352	27	0	0.0%	341	21	0	0.0%	340	0	0.0%
10542	Fiunary	137	43	0	0.0%	137	46	0	0.0%	137	50	0	0.0%	137	0	0.0%
10544	Twechar	2211	22	0	0.0%	2174	25	0	0.0%	2238	28	0	0.0%	2174	0	0.0%
10545	Strathblane	935	21	-1	-0.1%	937	24	0	0.0%	936	27	0	0.0%	935	-1	-0.1%
10546	Taynult	403	43	0	0.0%	403	46	0	0.0%	403	50	0	0.0%	403	0	0.0%
10548	Broughton	1122	21	-2	-0.2%	1106	24	0	0.0%	1117	27	0	0.0%	1094	0	0.0%
10549	Bridge Of Allan	5189	23	0	0.0%	5231	26	0	0.0%	5337	29	0	0.0%	5113	0	0.0%
10551	Leadhills	212	54	0	0.0%	211	58	0	0.0%	211	61	0	0.0%	211	0	0.0%
10552	Glespin	203	54	0	0.0%	265	58	0	0.0%	283	61	0	0.0%	203	0	0.0%

Table AI-5 : Worst Case impact to gross coverage of Interleaved channels on PSB multiplexes

Results Local TV 71 sites Run1 70% Locations	PSB_1	Ch	Chg on v5.5	%Chg on v5.5	PSB_2	Ch	Chg on v5.5	%Chg on v5.5	PSB_3	Ch	Chg on v5.5	%Chg on v5.5	3CORE	Chg on v5.5	%Chg on v5.5
10556 Deanston	300	53	0	0.0%	300	57	0	0.0%	300	60	0	0.0%	300	0	0.0%
10557 Ravenscraig HP	6128	21	0	0.0%	6123	24	0	0.0%	6075	27	0	0.0%	6075	0	0.0%
10560 Strontian	123	42	0	0.0%	123	45	0	0.0%	123	49	0	0.0%	123	0	0.0%
10564 Arisaig	202	23	0	0.0%	201	26	0	0.0%	200	29	0	0.0%	200	0	0.0%
10566 Kelvindale	9297	30	-28184	-75.2%	8260	48	-10253	-55.4%	13288	52	-2446	-15.5%	3602	-10965	-75.3%
10567 Uplawmoor	256	54	0	0.0%	256	58	0	0.0%	256	61	0	0.0%	256	0	0.0%
10568 Cumbernauld Village	10193	54	0	0.0%	10193	58	0	0.0%	10230	61	0	0.0%	10177	0	0.0%
10572 Acharacle	75	43	0	0.0%	75	46	0	0.0%	73	50	0	0.0%	73	0	0.0%
10574 Loch Feochan	126	58	0	0.0%	126	61	0	0.0%	126	54	0	0.0%	126	0	0.0%
10575 Kintraw	89	43	0	0.0%	89	46	0	0.0%	89	50	0	0.0%	89	0	0.0%
10578 Dunoon Forest Road	8539	21	0	0.0%	8461	24	0	0.0%	8626	27	0	0.0%	8441	0	0.0%
10591 Kilmelford	305	55	0	0.0%	307	59	0	0.0%	306	62	0	0.0%	304	0	0.0%
10595 Strathyre Link	104	43	0	0.0%	101	46	0	0.0%	93	50	0	0.0%	93	0	0.0%
10596 Strathyre	110	21	0	0.0%	110	24	0	0.0%	110	27	0	0.0%	110	0	0.0%
10600 Wenvoe	916944	41	0	0.0%	892506	44	0	0.0%	849914	47	0	0.0%	849022	0	0.0%
10601 Kilvey Hill	175200	23	0	0.0%	174635	26	0	0.0%	177658	29	-64	0.0%	173297	-34	0.0%
10602 Rhondda VP	27597	26	0	0.0%	27799	23	0	0.0%	27495	29	0	0.0%	27035	0	0.0%
10603 Mynydd Machen	147829	23	0	0.0%	148334	26	0	0.0%	126859	29	-849	-0.7%	124737	-639	-0.5%
10604 Maesteg	10179	22	0	0.0%	10208	28	0	0.0%	10260	25	0	0.0%	10178	0	0.0%
10605 Pontypridd	36525	22	0	0.0%	35913	28	0	0.0%	36430	25	0	0.0%	35742	0	0.0%
10606 Aberdare	24243	21	0	0.0%	24305	27	0	0.0%	24314	24	0	0.0%	24224	0	0.0%
10607 Merthyr Tydfil	17170	22	0	0.0%	17185	28	0	0.0%	17176	25	0	0.0%	17170	0	0.0%
10608 Bargoed	22453	21	0	0.0%	22010	27	0	0.0%	21819	24	0	0.0%	21731	0	0.0%
10609 Rhymney	9741	57	0	0.0%	9191	60	0	0.0%	9851	53	0	0.0%	9169	0	0.0%
10610 South Tredgar	1832	42	0	0.0%	1832	45	0	0.0%	1693	49	0	0.0%	1693	0	0.0%

Table AI-5 : Worst Case impact to gross coverage of Interleaved channels on PSB multiplexes

Results Local TV 71 sites Run1 70% Locations	PSB_1	Ch	Chg on v5.5	%Chg on v5.5	PSB_2	Ch	Chg on v5.5	%Chg on v5.5	PSB_3	Ch	Chg on v5.5	%Chg on v5.5	3CORE	Chg on v5.5	%Chg on v5.5	
10611	Clydach	1007	29	-124	-11.0%	1041	26	0	0.0%	1051	23	0	0.0%	980	-51	-4.9%
10612	Abertillery	6533	22	0	0.0%	6482	28	0	0.0%	6497	25	0	0.0%	6482	0	0.0%
10613	Ebbw Vale	23605	55	-222	-0.9%	23873	62	0	0.0%	23906	59	0	0.0%	23557	-178	-0.7%
10614	Blaina	5952	46	0	0.0%	6014	43	0	0.0%	6003	50	-1	0.0%	5940	0	0.0%
10615	Pontypool	23760	23	0	0.0%	23929	26	0	0.0%	21419	29	-162	-0.8%	21226	-157	-0.7%
10616	Cilfrew	4359	45	0	0.0%	4294	49	0	0.0%	4516	42	0	0.0%	4223	0	0.0%
10617	Blaenavon	14790	57	0	0.0%	15456	60	0	0.0%	14715	53	0	0.0%	14601	0	0.0%
10618	Abergavenny	16274	45	0	0.0%	16555	49	0	0.0%	16180	42	0	0.0%	16016	0	0.0%
10619	Ferndale	7679	57	0	0.0%	7655	60	0	0.0%	7718	53	0	0.0%	7655	0	0.0%
10620	Porth	16001	46	0	0.0%	16124	43	0	0.0%	16078	50	-6	0.0%	15940	0	0.0%
10621	Wattsville	4578	57	0	0.0%	4681	60	0	0.0%	4587	53	0	0.0%	4578	0	0.0%
10622	Llangeinor	23067	55	-1344	-5.5%	25969	62	0	0.0%	25716	59	0	0.0%	22929	-1288	-5.3%
10623	Treharris	6795	56	0	0.0%	6943	48	0	0.0%	6863	52	-1	0.0%	6790	0	0.0%
10624	Cwmafon	2905	21	0	0.0%	2926	27	0	0.0%	2927	24	0	0.0%	2904	0	0.0%
10625	Llyswen	1741	21	0	0.0%	1781	27	0	0.0%	1775	24	0	0.0%	1739	0	0.0%
10626	Llanhilleth	2402	45	0	0.0%	2387	49	0	0.0%	2388	42	0	0.0%	2360	0	0.0%
10628	Gilfach	4626	21	0	0.0%	4665	27	0	0.0%	4667	24	0	0.0%	4511	0	0.0%
10629	Taffs Well	14320	55	-1490	-9.4%	15985	62	0	0.0%	16026	59	0	0.0%	14235	-1419	-9.1%
10630	Ogmore Vale	2675	57	0	0.0%	2674	60	0	0.0%	2675	53	0	0.0%	2674	0	0.0%
10631	Abertridwr	6530	57	0	0.0%	6409	60	0	0.0%	6739	53	0	0.0%	6398	0	0.0%
10632	Ynysowen	14039	55	-652	-4.4%	14488	62	0	0.0%	14634	59	0	0.0%	13901	-517	-3.6%
10633	Ebbw Vale South	3780	21	0	0.0%	3916	27	0	0.0%	3809	24	0	0.0%	3772	0	0.0%
10634	Nant Y Moel	2145	21	0	0.0%	2093	27	0	0.0%	2126	24	0	0.0%	2093	0	0.0%
10635	Tonypandy	4078	55	0	0.0%	3848	62	0	0.0%	3893	59	0	0.0%	3848	0	0.0%
10636	Alltwn	3804	46	0	0.0%	3833	43	0	0.0%	3788	50	0	0.0%	3788	0	0.0%

Table AI-5 : Worst Case impact to gross coverage of Interleaved channels on PSB multiplexes

Results Local TV 71 sites Run1 70% Locations	PSB_1	Ch	Chg on v5.5	%Chg on v5.5	PSB_2	Ch	Chg on v5.5	%Chg on v5.5	PSB_3	Ch	Chg on v5.5	%Chg on v5.5	3CORE	Chg on v5.5	%Chg on v5.5	
10637	Aberbeeg	1831	46	0	0.0%	1860	43	0	0.0%	1836	50	0	0.0%	1831	0	0.0%
10638	Fernhill	7961	55	-231	-2.8%	8029	62	0	0.0%	8053	59	0	0.0%	7931	-83	-1.0%
10639	Penrhiwceiber	4155	57	0	0.0%	4075	60	0	0.0%	4190	53	0	0.0%	4075	0	0.0%
10640	Risca	4850	46	0	0.0%	5235	43	0	0.0%	5067	50	-5	-0.1%	4825	-4	-0.1%
10641	Trebanog	6225	21	0	0.0%	6162	27	0	0.0%	6152	24	0	0.0%	6152	0	0.0%
10642	Mynydd Bach	39444	58	0	0.0%	39282	61	0	0.0%	39486	54	0	0.0%	39168	0	0.0%
10643	Bedlinog	655	21	0	0.0%	645	27	0	0.0%	645	24	0	0.0%	645	0	0.0%
10644	Machen Upper	1351	55	-31	-2.2%	1374	62	0	0.0%	1381	59	0	0.0%	1344	-28	-2.0%
10645	Cwm Ffrwd Oer	2836	46	0	0.0%	3108	43	-5	-0.2%	2786	50	0	0.0%	2665	0	0.0%
10646	Blaenau Gwent	3827	57	0	0.0%	3790	60	0	0.0%	3889	53	0	0.0%	3790	0	0.0%
10648	Pennar	9754	46	0	0.0%	9937	43	0	0.0%	9937	50	-98	-1.0%	9658	0	0.0%
10649	Brecon	4720	58	0	0.0%	4715	61	0	0.0%	4729	54	0	0.0%	4714	0	0.0%
10650	Sennybridge	766	46	0	0.0%	782	43	0	0.0%	769	50	0	0.0%	764	0	0.0%
10651	Clyro	4056	47	0	0.0%	4045	44	0	0.0%	4046	41	0	0.0%	4035	0	0.0%
10652	Crickhowell	3555	21	0	0.0%	3557	27	0	0.0%	3556	24	0	0.0%	3551	0	0.0%
10653	Blackmill	595	22	0	0.0%	596	25	0	0.0%	595	28	0	0.0%	595	0	0.0%
10654	Llanfach	1052	57	0	0.0%	1038	60	0	0.0%	1077	53	0	0.0%	1038	0	0.0%
10655	Pennorth	3214	26	0	0.0%	3167	23	0	0.0%	3586	29	-10	-0.3%	3159	0	0.0%
10656	Pontardawe	26404	58	0	0.0%	26420	61	0	0.0%	26390	54	0	0.0%	26359	0	0.0%
10657	Deri	7165	22	0	0.0%	7235	28	0	0.0%	7235	25	0	0.0%	7049	0	0.0%
10658	Cwmaman	1514	45	0	0.0%	1548	49	0	0.0%	1471	42	0	0.0%	1459	0	0.0%
10659	Upper Killay	3512	21	0	0.0%	3527	27	0	0.0%	3540	24	0	0.0%	3487	0	0.0%
10660	Ton Pentre	10843	58	0	0.0%	10843	61	0	0.0%	10935	54	0	0.0%	10843	0	0.0%
10661	Trecastle	168	22	0	0.0%	168	28	0	0.0%	168	25	0	0.0%	168	0	0.0%
10662	Blaenllechau	3375	21	0	0.0%	3375	27	0	0.0%	3375	24	0	0.0%	3375	0	0.0%

Table AI-5 : Worst Case impact to gross coverage of Interleaved channels on PSB multiplexes

Results Local TV 71 sites Run1 70% Locations	PSB_1	Ch	Chg on v5.5	%Chg on v5.5	PSB_2	Ch	Chg on v5.5	%Chg on v5.5	PSB_3	Ch	Chg on v5.5	%Chg on v5.5	3CORE	Chg on v5.5	%Chg on v5.5
10663 Monmouth	6316	55	-99	-1.5%	6487	62	0	0.0%	6472	59	0	0.0%	6304	-86	-1.3%
10664 Usk	1183	52	0	0.0%	1181	56	0	0.0%	1181	48	-2	-0.2%	1179	-2	-0.2%
10665 Cwmfelinfach	3016	52	-53	-1.7%	3071	56	0	0.0%	2960	48	0	0.0%	2923	0	0.0%
10666 Llanfoist	8448	57	0	0.0%	8441	60	0	0.0%	8454	53	0	0.0%	8437	0	0.0%
10667 Nantyglo	3288	57	0	0.0%	3242	60	0	0.0%	3347	53	0	0.0%	3242	0	0.0%
10668 Abercynon	2743	58	0	0.0%	2758	54	0	0.0%	2743	61	0	0.0%	2743	0	0.0%
10669 Tynnewydd	2099	55	-167	-7.4%	2099	62	0	0.0%	2197	59	0	0.0%	2099	0	0.0%
10670 Craig Cefn Parc	2791	46	0	0.0%	2979	43	0	0.0%	2893	50	0	0.0%	2744	0	0.0%
10671 Briton Ferry	15459	46	0	0.0%	15620	43	0	0.0%	15509	50	0	0.0%	15404	0	0.0%
10672 Dowlais	6530	58	0	0.0%	6557	61	0	0.0%	6531	54	0	0.0%	6512	0	0.0%
10673 Rhondda Fach	2979	22	0	0.0%	2989	28	0	0.0%	2986	25	0	0.0%	2979	0	0.0%
10674 Trefechan	7653	45	0	0.0%	7553	42	0	0.0%	7649	49	0	0.0%	7549	0	0.0%
10675 Cruorney	295	21	0	0.0%	300	24	0	0.0%	299	27	0	0.0%	293	0	0.0%
10676 Tonyrefail	3038	55	-718	-19.1%	4008	62	0	0.0%	4012	59	0	0.0%	3038	-692	-18.6%
10677 Efail Fach	476	49	0	0.0%	476	45	0	0.0%	482	52	-4	-0.8%	476	0	0.0%
10678 Llanharan	1866	21	0	0.0%	1939	27	0	0.0%	1927	24	0	0.0%	1866	0	0.0%
10679 Burry Port	2648	58	0	0.0%	2630	61	0	0.0%	2648	54	0	0.0%	2630	0	0.0%
10680 Rhondda HP	3212	26	0	0.0%	3203	23	0	0.0%	3316	29	0	0.0%	3156	0	0.0%
10681 Gellifendigaid	3569	55	-88	-2.4%	3629	62	0	0.0%	3629	59	0	0.0%	3541	-88	-2.4%
10683 South Maesteg	3720	55	0	0.0%	3642	62	0	0.0%	3664	59	0	0.0%	3642	0	0.0%
10687 Van Terrace	939	45	0	0.0%	996	49	0	0.0%	915	42	0	0.0%	915	0	0.0%
10692 Neath Abbey HP	695	48	0	0.0%	675	52	-20	-2.9%	730	56	0	0.0%	675	-20	-2.9%
10693 Neath Abbey VP	11156	48	-1	0.0%	10576	52	-541	-4.9%	11256	56	0	0.0%	10533	-526	-4.8%
10694 Crumlin	7144	57	0	0.0%	7207	60	0	0.0%	7117	53	0	0.0%	7021	0	0.0%
10700 Divis	536549	27	0	0.0%	539241	24	0	0.0%	558341	21	-6332	-1.1%	534110	-37	0.0%

Table AI-5 : Worst Case impact to gross coverage of Interleaved channels on PSB multiplexes

Results Local TV 71 sites Run1 70% Locations	PSB_1	Ch	Chg on v5.5	%Chg on v5.5	PSB_2	Ch	Chg on v5.5	%Chg on v5.5	PSB_3	Ch	Chg on v5.5	%Chg on v5.5	3CORE	Chg on v5.5	%Chg on v5.5
10701 Larne	11321	45	0	0.0%	11209	49	0	0.0%	11425	42	0	0.0%	11209	0	0.0%
10702 Cammoney Hill	42220	46	0	0.0%	42312	43	0	0.0%	41877	50	0	0.0%	41312	0	0.0%
10703 Kilkeel	2913	45	0	0.0%	2913	49	0	0.0%	2997	42	0	0.0%	2913	0	0.0%
10705 Newcastle	6241	55	0	0.0%	6847	62	0	0.0%	6428	59	0	0.0%	6156	0	0.0%
10706 Armagh	8891	45	0	0.0%	9089	49	0	0.0%	8820	42	0	0.0%	8820	0	0.0%
10707 Black Mountain	157704	45	0	0.0%	157272	49	0	0.0%	158403	42	0	0.0%	156939	0	0.0%
10708 Whitehead	2353	48	-98	-4.0%	1935	56	-83	-4.1%	1912	52	0	0.0%	1885	-27	-1.4%
10709 Bellair	1301	48	0	0.0%	1234	56	-15	-1.2%	1237	52	0	0.0%	1234	-3	-0.2%
10710 Draperstown	1216	45	0	0.0%	1213	49	0	0.0%	1219	42	0	0.0%	1210	0	0.0%
10711 Moneymore	715	45	0	0.0%	715	49	0	0.0%	715	42	0	0.0%	715	0	0.0%
10713 Newry North	9540	41	0	0.0%	9474	44	0	0.0%	9551	47	0	0.0%	9464	0	0.0%
10714 Rostrevor	5404	48	-4	-0.1%	4769	46	0	0.0%	4766	50	0	0.0%	4758	0	0.0%
10715 Newry South	4656	45	0	0.0%	4626	49	0	0.0%	4657	42	0	0.0%	4626	0	0.0%
10716 Benagh	556	22	0	0.0%	373	28	0	0.0%	361	25	0	0.0%	361	0	0.0%
10718 Cushendun	96	22	0	0.0%	96	28	0	0.0%	96	25	0	0.0%	96	0	0.0%
10719 Cushendall	94	46	0	0.0%	94	43	0	0.0%	94	50	0	0.0%	94	0	0.0%
10720 Glynn	390	58	0	0.0%	390	61	0	0.0%	390	54	0	0.0%	390	0	0.0%
10721 Newtownards	4587	58	0	0.0%	4582	61	0	0.0%	4564	54	0	0.0%	4559	0	0.0%
10723 Banbridge	6201	44	0	0.0%	6206	46	0	0.0%	6201	50	0	0.0%	6201	0	0.0%
10724 Dromore	912	58	0	0.0%	912	61	0	0.0%	912	54	0	0.0%	912	0	0.0%
10727 Glenariff	976	58	0	0.0%	976	61	0	0.0%	976	54	0	0.0%	976	0	0.0%
10728 Leitrim	1317	57	0	0.0%	1319	60	0	0.0%	1315	53	0	0.0%	1312	0	0.0%
10730 Killowen Mountain	0	27	0	-	0	24	0	-	0	21	0	-	0	0	-
10732 Bangor	5734	62	0	0.0%	5749	55	0	0.0%	5734	59	0	0.0%	5721	0	0.0%
10735 Conlig	680	45	-31	-4.4%	711	49	0	0.0%	680	42	0	0.0%	680	0	0.0%

Table AI-5 : Worst Case impact to gross coverage of Interleaved channels on PSB multiplexes

Results Local TV 71 sites Run1 70% Locations	PSB_1	Ch	Chg on v5.5	%Chg on v5.5	PSB_2	Ch	Chg on v5.5	%Chg on v5.5	PSB_3	Ch	Chg on v5.5	%Chg on v5.5	3CORE	Chg on v5.5	%Chg on v5.5	
10740	Camlough	8354	58	0	0.0%	8417	61	0	0.0%	8354	54	0	0.0%	8352	0	0.0%
10800	Rowridge	878750	24	0	0.0%	882695	27	0	0.0%	874259	21	0	0.0%	871866	0	0.0%
10801	Salisbury	35888	57	0	0.0%	36895	60	0	0.0%	37020	53	0	0.0%	35518	0	0.0%
10802	Till Valley	944	46	-22	-2.3%	872	50	-63	-6.7%	913	43	-78	-7.9%	872	-62	-6.6%
10803	Ventnor	3892	42	0	0.0%	4046	45	0	0.0%	5205	49	-237	-4.4%	3753	-7	-0.2%
10804	Poole	40552	57	0	0.0%	49818	60	0	0.0%	38856	53	0	0.0%	36275	0	0.0%
10805	Whitehawk Hill	176376	53	-283	-0.2%	144140	57	-466	-0.3%	173197	60	0	0.0%	138250	-128	-0.1%
10806	Shrewton	803	41	0	0.0%	803	44	0	0.0%	803	47	0	0.0%	803	0	0.0%
10807	Findon	106515	41	0	0.0%	104250	44	0	0.0%	103475	47	0	0.0%	102792	0	0.0%
10808	Patcham	6597	43	0	0.0%	6442	46	-103	-1.6%	6157	50	0	0.0%	5907	0	0.0%
10810	Winterborne Stickland	6500	48	0	0.0%	6828	52	0	0.0%	6549	56	0	0.0%	6425	0	0.0%
10817	Corfe Castle	762	41	0	0.0%	760	44	0	0.0%	764	47	0	0.0%	760	0	0.0%
10819	Portslade	2244	41	0	0.0%	2082	44	0	0.0%	2082	47	0	0.0%	2082	0	0.0%
10820	Westbourne	13970	41	0	0.0%	11315	44	0	0.0%	11367	47	0	0.0%	11289	0	0.0%
10822	Ovingdean VP	650	43	0	0.0%	604	46	0	0.0%	910	50	0	0.0%	550	0	0.0%
10823	Saltdean	1214	51	0	0.0%	1615	55	0	0.0%	1200	47	0	0.0%	926	0	0.0%
10824	Coldean	3284	41	0	0.0%	4491	44	0	0.0%	3188	47	0	0.0%	3182	0	0.0%
10825	Bevendean	2127	46	-34	-1.6%	2311	43	0	0.0%	3140	29	-3076	-49.5%	1630	-517	-24.1%
10826	Brighton Central	13151	45	0	0.0%	12971	41	0	0.0%	11912	47	0	0.0%	9772	0	0.0%
10827	Donhead	706	41	0	0.0%	696	44	0	0.0%	696	47	0	0.0%	695	0	0.0%
10829	Millbrook VP	32083	41	0	0.0%	29297	44	0	0.0%	29577	47	0	0.0%	29297	0	0.0%
10830	Brighstone	908	41	0	0.0%	872	44	0	0.0%	867	47	0	0.0%	867	0	0.0%
10831	Hangleton	622	45	0	0.0%	1722	49	0	0.0%	908	42	0	0.0%	622	0	0.0%
10832	Lulworth	256	55	0	0.0%	267	59	0	0.0%	267	62	0	0.0%	256	0	0.0%
10833	Piddletrenthide	500	45	0	0.0%	466	49	0	0.0%	500	42	0	0.0%	466	0	0.0%

Table AI-5 : Worst Case impact to gross coverage of Interleaved channels on PSB multiplexes

Results Local TV 71 sites Run1 70% Locations	PSB_1	Ch	Chg on v5.5	%Chg on v5.5	PSB_2	Ch	Chg on v5.5	%Chg on v5.5	PSB_3	Ch	Chg on v5.5	%Chg on v5.5	3CORE	Chg on v5.5	%Chg on v5.5
10834 Luscombe Valley	3488	45	0	0.0%	5617	49	-4515	-44.6%	3485	42	0	0.0%	3117	-313	-9.1%
10836 Winterbourne Steepleton	1083	45	0	0.0%	1324	49	-2	-0.2%	1096	42	0	0.0%	1058	0	0.0%
10837 Cheselbourne	220	57	0	0.0%	218	53	0	0.0%	221	60	0	0.0%	218	0	0.0%
10838 Brading	423	41	0	0.0%	336	44	0	0.0%	336	47	0	0.0%	336	0	0.0%
10839 Singleton	393	41	0	0.0%	391	44	0	0.0%	391	47	0	0.0%	391	0	0.0%
10840 Ovingdean HP	48	43	0	0.0%	48	46	0	0.0%	113	50	0	0.0%	29	0	0.0%
10844 Horndean	1892	56	0	0.0%	1538	50	-408	-21.0%	1834	62	0	0.0%	1516	-122	-7.4%
10845 Canford Heath	5350	45	0	0.0%	5311	42	0	0.0%	4251	49	-3681	-46.4%	4019	-1292	-24.3%
10847 Poulner	4100	42	0	0.0%	4253	45	0	0.0%	3696	49	-199	-5.1%	3189	-183	-5.4%
10848 Bovington	310	41	0	0.0%	306	44	0	0.0%	306	47	0	0.0%	306	0	0.0%
10851 North Winchester	1210	56	-4	-0.3%	928	59	0	0.0%	777	49	-1932	-71.3%	679	-145	-17.6%
10852 Hythe Marina	4054	53	0	0.0%	3666	57	0	0.0%	4124	60	0	0.0%	3638	0	0.0%
10853 Hatch Bottom	16646	54	-2605	-13.5%	9675	58	0	0.0%	10740	61	0	0.0%	9675	0	0.0%
10859 Millbrook HP	1265	41	0	0.0%	1198	44	0	0.0%	1198	47	0	0.0%	1198	0	0.0%
10860 Rowridge VP	1029966	24	0	0.0%	1029001	27	0	0.0%	1030800	21	0	0.0%	1024252	0	0.0%
10900 Pontop Pike	1056300	54	0	0.0%	1093619	58	0	0.0%	1091406	61	0	0.0%	1050944	0	0.0%
10902 Newton	46966	23	0	0.0%	46510	26	0	0.0%	45170	29	-4023	-8.2%	44232	-1914	-4.1%
10903 Fenham	422843	21	-8228	-1.9%	390002	24	-62424	-13.8%	449503	27	0	0.0%	378093	-43555	-10.3%
10906 Weardale	10531	41	0	0.0%	10536	44	0	0.0%	10606	47	0	0.0%	10510	0	0.0%
10908 Alston	909	42	0	0.0%	906	45	0	0.0%	905	49	0	0.0%	905	0	0.0%
10909 Catton Beacon	853	43	0	0.0%	850	46	0	0.0%	845	50	0	0.0%	845	0	0.0%
10910 Morpeth	15749	22	0	0.0%	15500	25	0	0.0%	16089	28	0	0.0%	15213	0	0.0%
10911 Bellingham	1131	21	-68	-5.7%	1099	24	-5	-0.5%	1112	27	0	0.0%	1099	-5	-0.5%
10912 Humshaugh	1552	42	0	0.0%	1435	45	0	0.0%	1235	49	0	0.0%	1234	0	0.0%
10913 Haydon Bridge	3248	41	0	0.0%	3251	44	0	0.0%	3245	47	0	0.0%	3236	0	0.0%

Table AI-5 : Worst Case impact to gross coverage of Interleaved channels on PSB multiplexes

Results Local TV 71 sites Run1 70% Locations	PSB_1	Ch	Chg on v5.5	%Chg on v5.5	PSB_2	Ch	Chg on v5.5	%Chg on v5.5	PSB_3	Ch	Chg on v5.5	%Chg on v5.5	3CORE	Chg on v5.5	%Chg on v5.5	
10914	Shotleyfield	10706	22	0	0.0%	10682	25	0	0.0%	10736	28	0	0.0%	10682	0	0.0%
10915	Durham	3007	41	0	0.0%	3027	44	0	0.0%	3039	47	0	0.0%	3007	0	0.0%
10917	Ireshopeburn	710	55	0	0.0%	710	59	0	0.0%	709	62	0	0.0%	709	0	0.0%
10918	Hedleyhope	1242	43	0	0.0%	1242	46	0	0.0%	1242	50	0	0.0%	1242	0	0.0%
10919	Seaham	10380	41	0	0.0%	9470	44	0	0.0%	10303	47	0	0.0%	9470	0	0.0%
10920	Sunderland	26345	48	-119	-0.4%	24407	51	0	0.0%	16053	52	-45	-0.3%	15674	-64	-0.4%
10921	Staithe	713	51	0	0.0%	714	48	0	0.0%	726	52	0	0.0%	712	0	0.0%
10922	Esh	3232	42	0	0.0%	3232	45	0	0.0%	3230	49	0	0.0%	3230	0	0.0%
10925	Falstone	138	41	0	0.0%	138	44	0	0.0%	134	47	0	0.0%	134	0	0.0%
10926	Kielder	112	23	0	0.0%	112	26	0	0.0%	112	29	0	0.0%	112	0	0.0%
10927	Byrness	145	21	-2	-1.4%	142	24	-2	-1.4%	142	27	0	0.0%	142	0	0.0%
10928	Wall	5553	48	-136	-2.4%	5652	51	-25	-0.4%	5654	52	-10	-0.2%	5540	-112	-2.0%
10929	Whitaside	272	41	0	0.0%	272	44	0	0.0%	272	47	0	0.0%	272	0	0.0%
10930	Felling	12891	46	0	0.0%	12334	50	0	0.0%	12927	43	0	0.0%	12321	0	0.0%
10932	Blaydon Burn	1691	41	0	0.0%	1691	44	0	0.0%	1691	47	0	0.0%	1691	0	0.0%
10934	Allenheads	334	21	-2	-0.6%	335	24	0	0.0%	324	27	0	0.0%	321	-1	-0.3%
11000	Mendip	1608879	54	-19050	-1.2%	1394995	58	0	0.0%	1415213	61	0	0.0%	1390478	-98	0.0%
11001	Crockerton	8816	43	-24	-0.3%	8783	46	-2	0.0%	8704	50	-1	0.0%	8679	-2	0.0%
11002	Bath	34267	22	0	0.0%	34512	25	0	0.0%	34690	28	0	0.0%	34235	0	0.0%
11003	Westwood	20652	43	-279	-1.3%	20837	46	0	0.0%	21152	50	0	0.0%	20440	-154	-0.7%
11004	Avening	484	41	0	0.0%	484	44	0	0.0%	484	47	0	0.0%	484	0	0.0%
11005	Calne	7456	21	0	0.0%	7563	24	0	0.0%	7599	27	0	0.0%	7456	0	0.0%
11006	Redcliff Bay	1421	53	0	0.0%	1384	57	0	0.0%	1415	60	0	0.0%	1366	0	0.0%
11007	Bristol Kings Weston	96462	43	-384	-0.4%	96784	46	-21	0.0%	96466	50	-5279	-5.2%	92548	-2823	-3.0%
11008	Bristol Ilchester Crescent	69795	41	0	0.0%	69846	44	0	0.0%	69474	47	0	0.0%	69111	0	0.0%

Table AI-5 : Worst Case impact to gross coverage of Interleaved channels on PSB multiplexes

Results Local TV 71 sites Run1 70% Locations	PSB_1	Ch	Chg on v5.5	%Chg on v5.5	PSB_2	Ch	Chg on v5.5	%Chg on v5.5	PSB_3	Ch	Chg on v5.5	%Chg on v5.5	3CORE	Chg on v5.5	%Chg on v5.5
11009 Washford	1539	55	-12	-0.8%	1547	59	0	0.0%	1548	62	0	0.0%	1535	-12	-0.8%
11010 Easter Compton	264	53	0	0.0%	264	57	0	0.0%	264	60	0	0.0%	264	0	0.0%
11011 West Lavington	1912	23	0	0.0%	1945	26	0	0.0%	1785	29	-31	-1.7%	1773	-26	-1.4%
11012 Seagry Court	46646	41	0	0.0%	46923	44	0	0.0%	47037	47	0	0.0%	46541	0	0.0%
11013 Coleford	1543	42	0	0.0%	1543	45	0	0.0%	1685	49	0	0.0%	1543	0	0.0%
11014 Monksilver	1919	43	0	0.0%	1876	46	0	0.0%	2202	50	0	0.0%	1845	0	0.0%
11016 Ogbourne St George	281	43	-4	-1.4%	282	46	-3	-1.1%	284	50	0	0.0%	281	-3	-1.1%
11017 Wootton Courtenay	447	22	0	0.0%	447	25	0	0.0%	447	28	0	0.0%	446	0	0.0%
11018 Stroud	20471	43	-68	-0.3%	20460	46	0	0.0%	20550	50	0	0.0%	20339	-41	-0.2%
11019 Cirencester	19371	23	0	0.0%	20520	26	0	0.0%	19869	29	-1478	-6.9%	16105	-872	-5.1%
11020 Nailsworth	3820	23	0	0.0%	3809	26	0	0.0%	3555	29	0	0.0%	3540	0	0.0%
11021 Chalford	2558	21	0	0.0%	2624	24	0	0.0%	2699	27	0	0.0%	2549	0	0.0%
11022 Roadwater	260	23	0	0.0%	260	26	0	0.0%	174	29	0	0.0%	173	0	0.0%
11024 Marlborough	4326	22	0	0.0%	4339	25	0	0.0%	4339	28	0	0.0%	4326	0	0.0%
11025 Upavon	3330	23	0	0.0%	3482	26	0	0.0%	4550	29	-190	-4.0%	3262	0	0.0%
11026 Porlock	899	21	0	0.0%	899	24	0	0.0%	899	27	0	0.0%	899	0	0.0%
11027 Countisbury	613	55	0	0.0%	613	59	0	0.0%	613	62	0	0.0%	612	0	0.0%
11029 Cerne Abbas	1343	23	0	0.0%	1442	26	0	0.0%	2338	29	-481	-17.1%	1335	0	0.0%
11030 Hutton	12504	55	-12912	-50.8%	29361	59	0	0.0%	28997	62	0	0.0%	12486	-12804	-50.6%
11031 Bristol Montpelier	18965	21	0	0.0%	19058	24	0	0.0%	19450	27	0	0.0%	18654	0	0.0%
11032 Box	3264	43	-86	-2.6%	3265	46	-1	0.0%	3247	50	0	0.0%	3178	-41	-1.3%
11033 Dursley	1432	43	-22	-1.5%	1478	46	0	0.0%	1468	50	0	0.0%	1411	-22	-1.5%
11034 Slad	5440	23	0	0.0%	5428	26	0	0.0%	6129	29	-2	0.0%	4677	0	0.0%
11036 Frome	5601	23	0	0.0%	5663	26	0	0.0%	5348	29	-13	-0.2%	5348	-11	-0.2%
11038 Bristol Barton House	59657	23	0	0.0%	60197	26	0	0.0%	43492	29	-75	-0.2%	42726	-35	-0.1%

Table AI-5 : Worst Case impact to gross coverage of Interleaved channels on PSB multiplexes

Results Local TV 71 sites Run1 70% Locations	PSB_1	Ch	Chg on v5.5	%Chg on v5.5	PSB_2	Ch	Chg on v5.5	%Chg on v5.5	PSB_3	Ch	Chg on v5.5	%Chg on v5.5	3CORE	Chg on v5.5	%Chg on v5.5
11039 Bruton	1150	43	0	0.0%	1129	46	0	0.0%	1148	50	-11	-0.9%	1121	-6	-0.5%
11040 Kewstoke	2068	43	-49	-2.3%	2077	46	0	0.0%	2761	50	0	0.0%	2022	0	0.0%
11041 Burrington	1336	53	0	0.0%	1337	57	0	0.0%	1552	60	0	0.0%	1334	0	0.0%
11042 Ubley	3576	21	0	0.0%	3690	24	0	0.0%	3906	27	0	0.0%	3576	0	0.0%
11045 Portishead	7379	55	-1210	-14.1%	9122	59	0	0.0%	9129	62	0	0.0%	7339	-1189	-13.9%
11046 Backwell	10004	22	0	0.0%	10039	25	0	0.0%	10081	28	0	0.0%	9952	0	0.0%
11048 Tintern	523	21	0	0.0%	523	24	0	0.0%	523	27	0	0.0%	522	0	0.0%
11051 Chiseldon	914	21	0	0.0%	948	24	0	0.0%	951	27	0	0.0%	914	0	0.0%
11052 Chepstow	3420	21	0	0.0%	3484	24	0	0.0%	3492	27	0	0.0%	3420	0	0.0%
11053 Blakeney	562	21	0	0.0%	572	24	0	0.0%	573	27	0	0.0%	562	0	0.0%
11054 Lydbrook	1089	43	0	0.0%	1087	46	0	0.0%	1087	50	0	0.0%	1085	0	0.0%
11055 Parkend	1235	41	0	0.0%	1238	44	0	0.0%	1264	47	0	0.0%	1202	0	0.0%
11056 Clearwell	342	55	-32	-8.6%	392	59	0	0.0%	389	62	0	0.0%	342	-28	-7.6%
11058 Woodcombe	1476	55	-1076	-42.2%	2622	59	0	0.0%	2619	62	0	0.0%	1474	-1076	-42.2%
11059 Exford	165	41	0	0.0%	165	44	0	0.0%	165	47	0	0.0%	165	0	0.0%
11060 Kilve	143	55	-7	-4.7%	156	59	0	0.0%	156	62	0	0.0%	143	-7	-4.7%
11061 Crewkerne	3320	43	-4	-0.1%	3158	46	-9	-0.3%	3333	50	-26	-0.8%	3158	-8	-0.3%
11062 Carhampton	771	21	0	0.0%	771	24	0	0.0%	771	27	0	0.0%	771	0	0.0%
11063 Chitterne	159	43	0	0.0%	159	46	0	0.0%	159	50	0	0.0%	158	0	0.0%
11066 Chalford Vale	749	43	0	0.0%	742	46	0	0.0%	741	50	0	0.0%	741	0	0.0%
11068 Chilfrome	797	43	0	0.0%	795	46	0	0.0%	860	50	0	0.0%	784	0	0.0%
11071 Corsham VP	1664	43	-3	-0.2%	1669	46	0	0.0%	1698	50	0	0.0%	1656	0	0.0%
11072 Redbrook	255	42	0	0.0%	253	45	0	0.0%	253	49	0	0.0%	253	0	0.0%
11073 Siston	8401	23	0	0.0%	8391	26	0	0.0%	5899	29	-155	-2.6%	5899	-155	-2.6%
11074 Bristol Warmley	5178	42	0	0.0%	5221	45	0	0.0%	4986	49	0	0.0%	4925	0	0.0%

Table AI-5 : Worst Case impact to gross coverage of Interleaved channels on PSB multiplexes

Results Local TV 71 sites Run1 70% Locations	PSB_1	Ch	Chg on v5.5	%Chg on v5.5	PSB_2	Ch	Chg on v5.5	%Chg on v5.5	PSB_3	Ch	Chg on v5.5	%Chg on v5.5	3CORE	Chg on v5.5	%Chg on v5.5	
11076	Pillowell HP	790	43	0	0.0%	790	46	0	0.0%	834	50	0	0.0%	790	0	0.0%
11079	Pillowell VP	84	43	0	0.0%	84	46	0	0.0%	84	50	0	0.0%	84	0	0.0%
11080	Corsham HP	1757	43	-92	-5.0%	1760	46	-96	-5.2%	1652	50	0	0.0%	1631	0	0.0%
11083	Portbury	1606	21	0	0.0%	1632	24	0	0.0%	1636	27	0	0.0%	1606	0	0.0%
11100	Waltham	2055493	54	-896	0.0%	2031282	61	-2077	-0.1%	1691466	58	0	0.0%	1675977	-1899	-0.1%
11101	Nottingham	231469	21	-7761	-3.2%	242936	24	-184	-0.1%	245619	27	0	0.0%	231430	-7717	-3.2%
11102	Derby	36629	51	-10687	-22.6%	38557	48	-10046	-20.7%	54379	52	-24	0.0%	34666	-11566	-25.0%
11103	Leicester	7904	22	0	0.0%	8173	25	0	0.0%	8198	28	0	0.0%	7904	0	0.0%
11104	Belper	13146	55	-547	-4.0%	13684	59	0	0.0%	13071	62	-742	-5.4%	12821	-834	-6.1%
11105	Eastwood	2961	23	0	0.0%	3061	26	0	0.0%	3037	30	0	0.0%	2827	0	0.0%
11106	Stamford	4010	41	0	0.0%	4010	44	0	0.0%	3990	47	0	0.0%	3950	0	0.0%
11107	Parwich	225	21	0	0.0%	225	24	0	0.0%	225	27	0	0.0%	225	0	0.0%
11108	Stanton Moor	13321	55	-31	-0.2%	13177	59	0	0.0%	13217	62	-19	-0.1%	13106	-13	-0.1%
11109	Bolehill	9781	53	0	0.0%	8765	57	0	0.0%	9842	60	0	0.0%	8277	0	0.0%
11110	Matlock	6969	21	0	0.0%	6974	24	0	0.0%	6975	27	0	0.0%	6943	0	0.0%
11111	Ashford In The Water	1350	23	0	0.0%	1312	26	-29	-2.2%	1561	30	-18	-1.1%	1283	0	0.0%
11112	Birchover	476	42	0	0.0%	464	45	0	0.0%	522	49	0	0.0%	463	0	0.0%
11113	Little Eaton	8857	23	0	0.0%	9166	26	-94	-1.0%	5214	30	0	0.0%	4689	0	0.0%
11118	Darley Dale	3989	41	0	0.0%	4004	44	0	0.0%	3989	47	0	0.0%	3970	0	0.0%
11200	Durris	359529	22	0	0.0%	353843	25	0	0.0%	348409	28	0	0.0%	347228	0	0.0%
11201	Peterhead	10310	55	-1	0.0%	10658	62	0	0.0%	10659	59	0	0.0%	10213	0	0.0%
11202	Gartley Moor	14404	58	0	0.0%	14219	61	0	0.0%	14671	54	0	0.0%	14212	0	0.0%
11203	Rosehearty	12522	44	0	0.0%	12616	41	0	0.0%	10156	47	0	0.0%	10156	0	0.0%
11204	Balgownie	35636	46	0	0.0%	36054	43	0	0.0%	35041	50	0	0.0%	35009	0	0.0%
11205	Tullich	1921	55	0	0.0%	1679	62	0	0.0%	1797	59	0	0.0%	1679	0	0.0%

Table AI-5 : Worst Case impact to gross coverage of Interleaved channels on PSB multiplexes

Results Local TV 71 sites Run1 70% Locations	PSB_1	Ch	Chg on v5.5	%Chg on v5.5	PSB_2	Ch	Chg on v5.5	%Chg on v5.5	PSB_3	Ch	Chg on v5.5	%Chg on v5.5	3CORE	Chg on v5.5	%Chg on v5.5
11206 Braemar	307	45	0	0.0%	307	42	0	0.0%	307	49	0	0.0%	307	0	0.0%
11207 Tomintoul	247	46	0	0.0%	247	43	0	0.0%	247	50	0	0.0%	247	0	0.0%
11208 Banff	2243	42	0	0.0%	2340	45	0	0.0%	2287	49	0	0.0%	2242	0	0.0%
11209 Ellon	3732	45	0	0.0%	3715	49	0	0.0%	3720	42	0	0.0%	3697	0	0.0%
11210 Brechin	3634	46	0	0.0%	3624	43	0	0.0%	3624	50	0	0.0%	3624	0	0.0%
11211 Boddam	2892	45	0	0.0%	2702	42	0	0.0%	1272	49	0	0.0%	1272	0	0.0%
11213 Lumphanan	271	49	0	0.0%	276	42	0	0.0%	276	45	0	0.0%	271	0	0.0%
11222 Gourdon	320	55	0	0.0%	320	62	0	0.0%	320	59	0	0.0%	320	0	0.0%
11300 Dover	430710	50	-159	0.0%	405375	53	-1	0.0%	359564	51	-30021	-7.7%	286449	-10512	-3.5%
11302 Margate	22040	50	0	0.0%	29222	53	0	0.0%	24380	51	0	0.0%	21287	0	0.0%
11303 Dover Town	12544	26	0	0.0%	12684	23	0	0.0%	12519	30	0	0.0%	12338	0	0.0%
11304 Hythe	1634	21	0	0.0%	1717	24	0	0.0%	1615	27	0	0.0%	1520	0	0.0%
11305 Chartham	12463	21	0	0.0%	12533	27	0	0.0%	12290	24	0	0.0%	12177	0	0.0%
11306 Faversham	7673	22	0	0.0%	5311	28	0	0.0%	7731	25	0	0.0%	5272	0	0.0%
11308 Rye	877	43	0	0.0%	877	46	0	0.0%	1212	56	-52	-4.1%	729	0	0.0%
11310 Newnham	190	21	0	0.0%	159	27	0	0.0%	159	24	0	0.0%	159	0	0.0%
11311 Ramsgate	16297	50	0	0.0%	16386	53	0	0.0%	16323	51	0	0.0%	16218	0	0.0%
11313 Lyminge	585	22	0	0.0%	371	28	0	0.0%	657	25	0	0.0%	362	0	0.0%
11314 Horn Street	1081	43	0	0.0%	1035	46	0	0.0%	2258	56	0	0.0%	538	0	0.0%
11315 Folkestone	9962	26	0	0.0%	10056	23	0	0.0%	8332	30	0	0.0%	8157	0	0.0%
11316 Elham	589	26	0	0.0%	415	23	0	0.0%	394	30	0	0.0%	384	0	0.0%
11317 Lydden	509	46	0	0.0%	509	43	0	0.0%	485	45	0	0.0%	458	0	0.0%
11319 Turnpike Hill	781	43	0	0.0%	780	46	0	0.0%	536	56	0	0.0%	465	0	0.0%
11399 Broadstairs	8316	50	0	0.0%	8380	53	0	0.0%	8370	51	0	0.0%	8274	0	0.0%
11400 Tacolneston	516321	55	-5772	-1.1%	503366	59	0	0.0%	493050	62	-759	-0.2%	480267	-2633	-0.5%

Table AI-5 : Worst Case impact to gross coverage of Interleaved channels on PSB multiplexes